

*Seeing Results, Changing Lives*



THE INSTITUTE FOR  
HUMAN SERVICES, INC.

**2010**

Annual Report

JULY 1, 2009 – JUNE 30, 2010

## OFFICERS

C. Malina Kaulukukui  
*President*

K. James Steiner, Jr.  
*Vice President*

Alvin Sakamoto  
*Treasurer*

Kelli Abe Trifonovitch  
*Secretary*

## DIRECTORS

Edmund C. Aczon

Christopher Benjamin

Ann R. Botticelli

William G. Chung

Sharon M. Crofts

Dick Dubanoski

Karl Essig

Ian Fitz-Patrick

Stacey C.G. Hee

Audrey Hidano

Michael T. Jones

Rev. Andy Lee

Violet Loo

Curt L. Nakamura

Bruce M. Nakaoka

M.E. Reich

Patsy K. Saiki

Rev. Timothy Sexton

Frank B. Smith

Sean G. Tadaki

Lynne T. Unemori

Aileen Utterdyke

Scott D. Williams

Sylvia Yuen

*Member Emeritus:*

Reverend Monsignor

Terrence Watanabe

## AGENCY DIRECTORS

Connie Mitchell  
*Executive Director*

Gordon Ortiz Sr.  
*Director of Facilities & Operations*

John Sousa  
*Clinical Director*

Gaylen Shintaku  
*Director of Finance*

Ruth Weerapan  
*Human Resources Director*

Minda Golez  
*Housing & Employment Program Director*

Sherry Chong  
*Director of Performance Management*

## BUSINESS & ADMINISTRATIVE

Leanne Aken

Kate Bepko

Mary Calderon

Leslie Fine

Scott Fukuji

Rose Gladstein

Marilou Job

Joanne Lesh

Aaron Lum

Chandra Maroney

Aracile Saromo

Leigh Smith

Jan Sutcharitkul

## SHELTER & MEAL PROGRAM OPERATIONS

Roy Afe

Fionnah Alo

Taumaaoe Atuatasi

Robert Barrios

Chersita Bossy

Joseph Bray

Nelson Caluyo

Joezer Dace

Foloi Faitau

Nara Feagai

Roosevelt Ford, Jr.

David Garcia

John Gragas

Chauncey Grie-McKeague

Lale Heather

Michael Higa-Puaoi

Mike Himeno

Kalae Hoopai

Alfred Hoopii

Jennifer Hughes

Ana Iose

Warren Izawa

Bridgette Kahanaoi

Yvette Kahuli

Seuao Kaio

Alison Kam

Lino Kavika

Rubben Kelemete

Chastity Ki

Kris Kualii

Norma Kujuuji

Mike Laikupu

Leauma "Jr." Laulu

Fanua Lautalo

Panina Leae

Lemisio "Junior" Lemalu

Cindy Lewis

Felisha Liilii

David Lunceford

John Maemori

Paolo Matsumoto

Chris McClelland

Teresa McCollum

Waldean McCoy

Ernest "Makena" McCrocklin

Iwalani Miles

Lee Miyashiro

Singer Moore

November Morris

Mario Noveloso

Justin Phillips

Stephen Rock

Miguel Rodriguez

Alberta Silva

Kahikilani Silva

Lynette Sniffen

Janice Sos

Kaea Sugata

Katherine "Moki" Summers

Naseri Sunia

Tutu Tagaloa

Willie Talamoa

Angie Taumua

Loto Tautolo

Patrice Tautua

Tony Togia

Fuaga Togiola

Elijah Uli

Mercedes Verdejo

## SOCIAL SERVICE PROGRAMS

Tana Alualu

Heidi Apau

Charles Azada

Kanui Bell

Shelly Bonoan

Jeremai Cann

Sarah "Shawzy" Cann

Shanna Clinton

Jane Donahoe

Angela Dumais

Feagai "Kookie" Fajtele

Temple Forsythe

Aza Gorgalian

Jeannette Gushiken

Hunter Heavilin

Fadeelah Holivay

Melinda Hottendorf

Avril Jenkins

Shena Johnson

Jennifer Joyce

Isao Kaji

Shannon Kala-Wilsey

Fred Kaufusi

Carrie "Lali" Lai-Hipp

Jackie Lee

Chris Mercado

Lucas Miller

Colleen Miyashiro

Gloria Moe

Lydi Morgan

Denise Nakamura

Ed Nakamura

Hipa "Jr." Neria

Julie Nguyen

Gabriela Orantes

Destiny Pakele

Annette Pomisino

Anja Ramirez

Primrose Raquel

Adam Reeder

Excuse Sananap

Helen Shaudys

Melissa Smith

Manuela Sound

Elfriede Suda

Millette Tapiador

LaVerne Tong

Alan Tran

Francyne Wase

Robert "Jason" Watkins

David Wire

## A MESSAGE FROM THE EXECUTIVE DIRECTOR

Aloha IHS Ohana,

Dickens once wrote, "It was the best of times, it was the worst of times..." and nothing could have been truer of life at IHS this past year. How paradoxical to experience so many blessings while walking through the dark valley of budget cuts and political battles. While we fought for a permanent "home" for chronically homeless people, we also continued to work with the community to literally break ground for urban farming through edible landscaping in front of our Women and Family Shelter. And while homelessness was being explored from different angles by the media – from the new arrivals from the Mainland to those creating health hazards with their encampments on the Leeward Coast – we refused to be distracted from our task at hand of ending homelessness wherever we encountered it.

It continues to be my belief that those who support IHS always deserve a clear picture of how lives have been transformed beyond the crisis need for shelter and food. While those two needs have historically always provided entree to broader help at IHS, our ability to triage and link people with other community services has never been more effective and efficient. This year, our annual report includes highlights of our many accomplishments.

Real success happens when people choose to work with unity toward a worthy goal. That is a common experience for IHS staff, who have not only established highly competent and compassionate teams among themselves, but also invite others to join in the mission. And a mission it truly is for our staff. A group of more devoted and hard-working people could not be found. What kind of staff sacrifices weekends to do homeless outreach in their neighborhood? Who goes out of their way to look for and help deliver furniture to a family moving into their home for the first time in years? Who would patiently soothe a woman ranting and raving at the top of her lungs so that she might one day see the need to come into the shelter? Who would spend their own time organizing a fun and delicious picnic for people who aren't given the time of day by most passers-by? Who takes the time to sit at the bedside of a lonely dying man who is mentally ill, but not so ill that he doesn't understand that someone cares about him? These are all ways in which IHS staff have gone the extra mile with people in pain who have been guests or clients.

To them, I offer my deepest thanks and to you who support what we do, I thank you for believing in the power of listening, affirming, caring...and simply loving people. Thank you for entrusting us with your precious resources to help people touched by homelessness. We are honored and humbled by your partnership.

Mahalo nui loa,

Connie Mitchell  
*Executive Director*

## RISING TO THE CHALLENGE OF THE TIMES

A stagnant economy characterized by unemployment hovering around 10% across our nation and staggering deficits in the State budget in Hawaii. Growing visibility of urban homelessness in city parks and heightened migration of impoverished persons to our islands. A clash of values between advocates of a housing approach to the chronically homeless and vocal dissenting voices from within the Downtown/Chinatown neighborhood. These were some of the themes that painted the backdrop for providing homeless services to our Oahu community in FY2010.

*We provided 88,167 bed nights in our two emergency shelters in FY2010.*

For IHS, The Institute for Human Services, Inc., the year demanded more of the agency than ever before in so many ways. We had to rethink approaches to helping educate our community to better understand the intricacies of assisting a diverse population that was simply regarded as “the homeless” and deliver more services with less resources – all while responding to the growing need for help in the community around us.



## REACHING OUT TO HELP

Outreach was redefined to include more than our weekly forays into our neighborhood to feed, assess and render aid to people in hopes of encouraging those who slept at bus stops, parks and lawns or camped on sidewalks to come into the shelter. Some of our Housing Specialists began to comb the beaches on the Leeward Coast to assist unsheltered working families to gain access to stable housing. We also assertively reached out to those hard hit by the economy, people who never thought they would need to turn to a homeless provider for assistance but now found themselves jobless and on the brink of eviction.

Homeless prevention, rapidly re-housing people through rental assistance supported by the American Reinvestment and Recovery Act (ARRA), and meals served to those unable to make ends meet, resulted in non-shelter residents comprising more than 50% of those assisted during the year. For the first time in our 32-year history, IHS was preventing more homelessness than responding to the immediate emergency shelter needs of homeless persons. This phenomenon likely reflected the proliferation of need as much as our proactive strategies to halt homelessness before it began.

*We provided 231,686 meals.*

## NEW APPROACHES AND INTERVENTIONS

Our constant efforts to identify evolving sub-populations of homeless and to better understand the challenges and needs of unsheltered people, particularly in the urban Honolulu core, helped IHS to devise more effective approaches and interventions to motivate and empower our shelter guests and clients. Despite a flagging economy, a culture of employment within IHS continued to grow. For any able-bodied person in the shelter, seeking employment was expected, and our Employment Support Program was there to assist by coaching guests in their job searches, résumé writing and interview preparation. Referrals to homeless/offender-friendly employers along with compassionate but structured supportive case management produced growing success with employment, an outcome tracked with all guests managed by an IHS case manager.



## WORKING WITH PARTNERS TO DO MORE

Partnerships were also redefined as we made more intentional efforts to welcome any individual or group who wanted to channel their desire to be a part of a solution to homelessness. From helping us construct grow beds for our edible gardens to tutoring children in our after-school Homework Club to offering grants to fund more case management coaching for our families, community volunteers and philanthropists engaged in new ways to join the battle against homelessness. Gifts of time, money and in-kind donations large and small helped us log a banner year for assistance offered and lives renewed. Robust service partnerships also enhanced quality and outcomes among our programs. Honolulu Community Action Program approached IHS to initiate a "Get Healthy" nutrition supplement program and the Hawaii Community Foundation offered continued support for our offender Community Re-Entry Program and a Community Stabilization Initiative that focused on housing households at risk for homelessness. Further stimulating growth in our edible gardens and imagination among our Keiki were our partnerships with Laulima Eco-Friendly Alliance of Farms (LEAF) and the Green House's Learning Environmental Awareness Program (LEAP).



*82% of families that exited IHS moved into stable housing. Of family adults exiting IHS, 58% were employed.*

## OUR STAFF: DEDICATED TO TRANSFORMING LIVES

At the core of all of IHS's efforts was a group of dedicated individuals and teams who passionately and thoughtfully carried out our mission of providing respite and transforming lives. The IHS Board of Directors led the way by insisting on a focus on significantly changing people's lives and ending homelessness permanently. Armed with clear marching orders, management and staff constantly brainstormed new strategies for becoming more effective and efficient in the face of shrinking resources. As a result, the agency focused Community Based Case Management efforts on shelter residents suffering mental illness and networked with other service providers to meet the needs of those out in the community. In parallel, Housing and

Employment staff stepped up prevention and resolution of homelessness with phenomenal results.

Past years' efforts to integrate our programs paid off by leveraging all of our programs in some way, with both shelter guests and community clients often benefiting from more than one program at a time. A family in the Homeless Prevention and Rapid Re-Housing Program could benefit from our monthly food drop at the shelter run by our Meal Program. Or a family in our Shelter Program could be quickly referred to our Employment Specialist. These experiences of internal service integration also built capacity for staff to collaborate with other organizations outside of IHS.



## LOOKING FORWARD

In the area of administration, financial accountability for the work, tracking outcomes, maintaining and enhancing operations of two facilities and raising support to cover the widening gap in our budget caused by government cutbacks required nimble responses and plain old hard work. As the year drew to a close, we at IHS remained convinced of the relevance of our work, and considered ourselves fortunate to be surrounded by government, other service providers, foundations, businesses, schools, faith-based and community groups and individuals for whom we are deeply grateful.

*Through outreach and case management, we helped prevent homelessness for 66 families (214 family members).*



## ABOUT IHS

IHS, The Institute for Human Services, Inc., was founded in 1978 by the Reverend Dr. Claude F. Du Teil to help the homeless people of Honolulu. Originally known as the "Peanut Butter Ministry" due to Father Claude's recognized habit of passing out peanut butter sandwiches to hungry and homeless individuals at his initial Smith Street location in Chinatown, the agency was incorporated as a 501(c)(3) non-profit organization in 1980.

Thirty years later, IHS continues to faithfully serve individuals and families experiencing homelessness and those at risk of homelessness. IHS operates two emergency homeless shelters, one for single adult men located at 350 Sumner Street, and one for single adult women and families with children at 546 Kaaahi Street.

Over the past several years, IHS has greatly expanded its services beyond emergency shelter. Key program services include outreach and intensive case management for homeless individuals with serious mental illness, permanent supportive housing for chronically homeless individuals with long-term disabilities, community re-entry services for non-violent offenders, employment placement services, and housing placement and rental assistance for homeless and at-risk families and individuals.

IHS is committed to bringing best practices – such as assertive outreach and permanent supportive housing – that can reduce the problem of homelessness in our community, especially among the chronically homeless population.

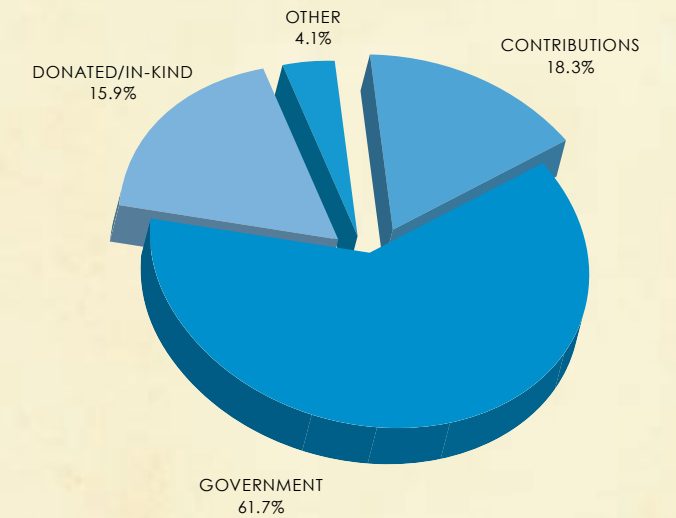
*We received help from 158 volunteers providing 5,582 hours, and 154 groups totaling 20,440 "people hours."*



## FINANCIAL STATEMENT OF ACTIVITIES FOR YEAR ENDING JUNE 30, 2010

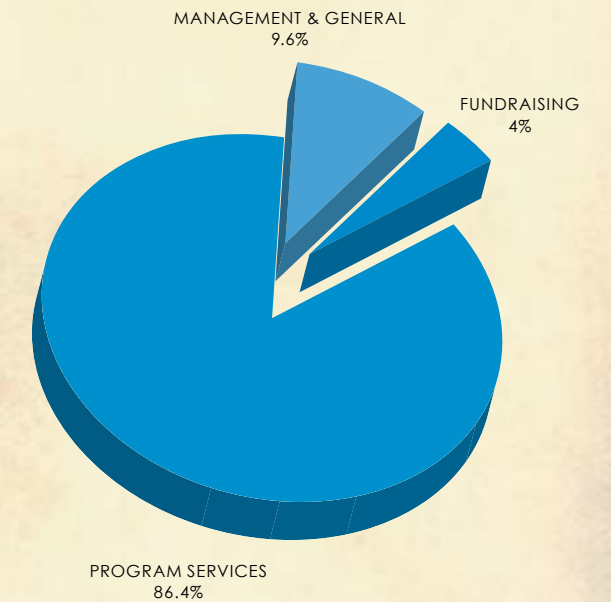
### REVENUES AND OTHER SUPPORT

CONTRIBUTIONS	\$1,341,926
GOVERNMENT GRANTS	\$2,441,812
STATE OF HAWAII STIPEND PROGRAMS CONTRACT	\$1,765,129
DONATED USE OF FACILITIES	\$719,983
GOVERNMENT FEE FOR SERVICE	\$307,013
DONATED FOOD	\$424,847
DIVIDENDS AND INTEREST	\$102,256
OTHER	\$197,352
DONATED STOCKS, EQUIPMENT & OTHER GOODS	\$19,297
<b>TOTAL REVENUES AND OTHER SUPPORT</b>	<b>\$7,319,615</b>



### EXPENSES AND NET ASSETS

SHELTER	\$2,184,655
SOCIAL SERVICES	\$2,819,159
COMMUNITY BASED CASE MANAGEMENT	\$515,377
MEAL SERVICE	\$974,354
VOLUNTEER	\$103,169
<b>TOTAL PROGRAM SERVICES</b>	<b>\$6,596,714</b>
MANAGEMENT AND GENERAL	\$731,838
FUNDRAISING	\$303,925
<b>TOTAL EXPENSES</b>	<b>\$7,632,477</b>
CHANGE IN SPLIT INTEREST AGREEMENT	\$72,431
<b>NET INCREASE IN NET ASSETS</b>	<b>(\$240,431)</b>



### NET ASSETS, END OF YEAR

UNRESTRICTED	\$3,808,638
TEMPORARILY RESTRICTED	\$307,666
PERMANENTLY RESTRICTED	\$2,390,725
<b>TOTAL NET ASSETS END OF YEAR</b>	<b>\$6,507,029</b>

## FY2010 ACCOMPLISHMENTS

**Emergency Shelter Program** served 1,268 unduplicated individuals with an average daily active census of 275 and provided 88,167 bed nights.

**HPRP Housing Program** (Homeless Prevention and Rapid Re-Housing Program) assisted 89 households (315 unduplicated persons) avoid displacement; \$273,235 in short-term assistance provided.

**Meal Program** provided 231,686 meals, averaging 19,307 meals per month – 635 meals per day.

**Shelter Plus Care Supportive Housing Program** served 117 clients with a disability, including 45 new individuals.

**General Case Management Program** served an average of 150 individuals per month with an average of 600 referrals per month; 128 unduplicated individuals received intensive case management with 86% of men and 59% of women transitioning to housing upon shelter exit.

**Family Shelter Case Management Program** served 85 families with 167 children. Of families that exited IHS, 82% moved into stable housing (34% into permanent housing and 48% into transitional housing). Of family adults exiting IHS, 58% were employed.

**Children's Academic Support and Enrichment Program** offered 120 sessions in preschool programs; served on average 38 participants per month with an average monthly attendance of 100 sessions. Homework Club offered 160 sessions; served on average 23 children per month with an average monthly attendance of 155 sessions.

**Urban Farming Initiative** (new during FY2010) piloted growing systems and established collaborations with other community organizations.

**Community-Based Family Outreach and Case Management** helped prevent homelessness for 66 families (214 family individuals) by maintaining or finding new housing.



**Health Promotion and Outreach** screened 100% of shelter guests for TB, and risks for hepatitis were assessed. 132 health screening clinics and education programs provided. 134 individuals received outreach services. IHS received 237 referrals for emergency shelter from hospitals and clinics. Assisted through collaboration with University of Hawaii and Hawaii Pacific University.

**Community-Based Case Management** served 220 consumers, most whom are or were homeless. Of 62 consumers who were case managed at year-end, 61% were in housing and 84% were receiving psychiatric consultation.

**Civic Engagement Program** for Emergency Shelter Guests expanded in FY2010 from IHS's informal guest volunteer activities. In total, 98 individuals provided 21,816 hours of service, averaging 30 individuals per month providing 1,818 hours.

**Community Re-Entry Program** served 41 individuals; 44% were employed when discharged and 51% obtained housing.

**IHS Community Volunteer Program** received help from 158 volunteers providing 5,582 hours, and 154 groups totaling 20,440 "people hours."

**TANF Housing Program** (Temporary Assistance for Needy Families) assisted 188 households, 791 unduplicated persons into rentals; provided \$253,719 in short-term assistance.

## DONOR LIST BY CATEGORY

### \$25,000+

Aloha United Way  
The Cades Foundation  
Community Stabilization Initiative Fund of the HI Com Found  
Ellen M. Koenig Memorial Fund  
The Harry & Jeanette Weinberg Foundation, Inc.  
Hawaii Community Foundation  
Sophie Russell Testamentary Trust

### \$10,000 – 24,999

Armstrong Foundation  
The Bretzlaff Foundation  
C.N. Wodehouse Hawaii Charities Trust  
Carmel Partners  
The Chamber of Commerce of Hawaii Public Health Fund  
Combined Federal Campaign  
Ernest H. Hui Family Foundation  
Friends of Hawaii Charities  
Henry & Colene Wong Foundation  
Henry Dwight Damon  
Jean & William K. H. Mau Foundation  
Jean I. Fennimore Fund of The Hawaii Community Foundation  
Macy's West - Ala Moana  
Paul C. T. & Violet Shaw Loo Fund  
The Pettus Foundation  
Pu'uhonua Nonprofit Corp

### \$5,000 – \$9,999

Alston Hunt Floyd & Ing  
Fidelity Charitable Gift Fund  
Hawaii Women's Legal Foundation  
Hawaiian Electric Ind. Charitable Foundation  
International Association of Machinists & Aerospace Workers  
Keith & Polly Steiner Family Foundation  
Kitaro Watanabe Fund  
Kosasa Foundation  
Macy's Foundation  
Mary Lou Cecil Charitable Trust  
The MacNaughton Group  
Thomas & Elizabeth Brodhead Foundation  
Osamu Fukuyama  
Gene and Jean Grippin  
John H. Plews

### \$1,000 – \$4,999

Brodhead Investment Limited

C.M. Bidwell & Associates, Ltd.  
Harold K.L. Castle Foundation  
Christ Church Uniting Disciples & Presbyterians (CCU)  
City Mill Company, Ltd/ C.K. Ai Foundation  
Commercial Electric, Inc.  
Excelsior Lodge 1 loof  
Friends Of The 50th State Commemoration  
Gentry Homes, Ltd.  
Geotech Solutions, Inc.  
German Benevolent Society of Honolulu

Greek Orthodox Ladies Philoptochos Society  
Greenfleet Hawaii LLC  
Harmony Chapter #4, OES  
Hawaii Supply, LLC  
Hawaii United Methodist Union  
Hawaiian Isles Petroleum LLC  
Hawaiian Telcom  
Holy Nativity Thrift Shop  
Hung Wo and Elizabeth Lau Ching Foundation  
InSynergy Engineering, Inc.  
InVision Imaging, Inc.  
Iolani School  
Ivena M. Ziegenhein Fund  
Iwilei Business Center  
L.Q. Pang Foundation  
Leahi Swim School  
Lex Brodie's Tire Company  
Marr Jones & Wang  
Mary and Paul Wagner Fund  
MCAS Chapel Fund  
Nagamine Okawa Engineers, Inc.  
Nuuuanu Congregational Church  
Oceanic Time Warner Cable  
PACIFIC CARES  
Pacific Legacy, Inc.  
Pacific Rainbow Foundation  
Philpotts & Associates  
Planning Solutions, Inc.  
The Queen's Health Systems - Corporate Services  
Rac Trust  
Robert A. Spicer Trust  
Roosevelt High School  
ROSES Systems Solutions  
Shiro & Associates, Inc.  
Sidney Stern Memorial Trust  
Sorooptimist International of Windward Oahu  
SSFM International Engineers, Inc.  
St. Christopher's Church  
St. John Lutheran Church  
State Farm Insurance Company  
State Farm Mutual Automobile Insurance Company  
The City Church of Honolulu  
The Earl M. & Margery C. Chapman Foundation

The Jhamandas Watumull Fund  
The McVay Family Foundation  
Topa Financial Center - Hawaii  
Wal-Mart Foundation  
Wesley United Methodist Church  
Windward Jewelers, Inc.  
YASU CORPORATION DBA  
THE RUNNING ROOM  
Stephen D. and Emi Arnold  
Judith E. Barrett  
James D. Bell  
Christopher and Melissa C. Benjamin  
Margaret M. Birnie  
Daniel B. and Gloria N. Boylan  
Dan Case  
Andrew I.T. Chang  
Ann B. Catts  
Matthew P. S. and Nicole Chapman  
Lloyd F. and Aileen H. Char  
Victoria Y. N. Christiansen  
Robert M. Creps  
Raymond and Eunice I. de Hay  
Phyllis J. B. Dendle  
Peter Drewliner and Charles E. Higa  
David S. Druz  
Lee A. Errett  
Karl P. and Megumi Essig  
David J. and Elizabeth J. Fitz-Patrick  
Andrea Fleig  
Frank K. Goto, Jr  
Joyce H. Haas  
Marvin B. Hall  
Michael S. Hanson  
Richard and Peggy Hastings  
Lenley R. Hawksworth  
Robert S. and Germaine L. Hines  
Betty F. Hirozawa  
Melanie Holt and Tim Bostock  
Ida M. Holsinger  
Christina M. Hom  
Martin Hsia  
Thomas Hughes  
Tad Y. and Carol K. Iwanuma  
David A. Johnson  
Michael T. Jones  
Richard F. and Angelica T. Kahle  
Karen and David Stoutemyer  
Howard H. and Audrey M. A. Karr  
Dr. Peter and Nancy Kessinger  
Mary J. D. Kodama  
Steven T. and Estrellita Komura  
David J. Lam  
James G. Lam  
Merton Lau  
Andrew R. Y. and Alli M. E. Lee  
Peter C. and Mary Lou Lewis  
Bernice Littman  
Lawrence and Ruth Lockett

Louis P. and Doreen L. Lopez  
Donald K. and Diane Maruyama  
Peter Mashimo  
Gregory G. and Gertraud Maskarinec  
Gary S. Miyamoto  
Randall I. and Teresa A. Morikawa  
John K. Morioka  
Francis T. Nakamoto  
Evelyn C. Painter  
Diane J. Plotts  
Alan B. Richardson, CPA  
Norman and Esther Round  
Clifton W. and Abigail Royston  
Nelson C. and Carol Santiago  
Patricia T. and George Schnack  
Jeri Simons  
K. James and Jeri J. Steiner  
Lawrence J. Taff  
Jolene Taga  
Jerrod and Vanessa Tamashiro  
Norman K. and Rachel Uehara  
Kenneth T. Uemura  
John C. and Marion M. Walker  
Jerry A. and Donna S. Walker  
Bradley Waters  
Karen K White  
Evans K. and Marianne K. Whiting  
Lewis and Susan Williamson  
Pedar C. and Lana Wold  
Wendell Wong  
John A. and Margo B. Wray  
Ted H. Yamada  
Patrick K.S.L. Yim  
Sylvia S. Yuen and Harold S. Masumoto

### \$500 – \$999

Alii Fire Protection Co., Ltd.  
Atlas Insurance Agency Foundation  
BF Tile, Inc.  
Central Planet Repair, LLC  
Coastal Construction Company, Inc.  
D.R. Horton Schuler Division  
Eaton-Yara Fund, advised fund - Silicon Villy Comm Foundation  
Electronic Scrip Inc.  
Emmanuel Episcopal Church  
Grace Pacific Corporation  
Herbert Chock & Associates, Inc.  
His Precious Word Fellowship, Inc.  
HonBlue, Inc.  
Kailua Christian Church  
Knights of Pythias, Mystic Lodge #2  
Larry and Beatrice Ching Foundation  
Lauhala Trading Company  
Ling Hou Hing Pang Society

## DONOR LIST BY CATEGORY

Manoa Valley Church  
NSCDA in the State of Hawaii  
Quest Marketing  
Riches Hawaii, Inc.  
Site Engineering  
The Ford Foundation  
Trans Executive Airlines of Hawaii  
Unified Enterprises Corporation  
University Health Alliance  
Windward United Church of Christ  
Women's League of Central Union Church  
Yasuko Mitsuyasu New Year's Day Meal Fund  
Dale Ammerman  
Ben Anderson  
Eric A. and Mari Ann L. Arveson  
Alison L. Awong  
John H. and Maile M. Bay  
Renata Bell  
Jerry Bentley and Carol Mon Lee  
Alvin T. Beppu  
Gertrude F. Berger  
Max G. and Alice Botticelli  
David and Elizabeth Bremer  
Timothy W. and Sara Brilliande  
George D. and Moira S. Bussey  
Erlinda M. Cachola, M.D.  
Rosemary Casey  
Tony Cavanagh  
Linda and Richard Chan  
Herbert S. Chock  
Sherwood S. and Raelene Y. Chock  
Mae M. Chong  
Debra C. Chun  
Charles I. Cook  
Nancee J. Crispin  
Robert V. and Doris A. Culp  
Concetta Di Leo  
William J. and Jo Ann Dornbush  
Roberta R. Du Teil  
Richard A. Dubanoski  
William Dunn  
James F.C. Evans  
Frank M. and Eleanor J. Fernandez  
Daniel J. Fischberg  
Dudley W. and Marion C. Foster  
James W. Frierson, Jr.  
Lynn K. Fujimoto, D.M.D.  
Robert T. Fujioka  
Helen G. Gary  
Ellen Godbey Carson and Robert C. Godbey  
Dorothy L. Gulden  
Gary Y. Hasegawa  
Mark H. and Diane D. Hastert  
Robert Y. Hayashida  
Richard A. Heltzel  
Leta A. Herman  
Dean M. Hirahara

Judy Y. Hirashima  
Irving N. Hirata  
David K. and Jacquelyn R. Hong  
Julia S. Ing  
Robert H. and Janie H. Iwai  
Robert D. and Juanita Jacobsen  
Paul W. and Ann Jones  
Wesley L. and Fay M. Jones  
Laurie R. Kaimuloa  
Steve Kakuni  
Grace B. Kam  
Fred I. and Alice T. Kamemoto  
Thomas B. Kamikawa  
Mary J. Kong  
Richard D. Kornowski  
Patrick T. and Carole C. Lai  
Jodi A. and Timothy M. Lam  
Bill and Susan Lampe  
Walter J. and Shirley F. Laskey  
Laurelle S. Lee and Clifford T. Shishido  
Edith Leong  
Michael and Lily Ling  
Mark and Claire B. Litchman  
Arthur B. Longstreet  
April Luria, Esq  
James G. Macdonald  
Janice Marsters  
Anne M. and Dal Martin  
Marvin and Barbara Mathews  
Robert and Verna Maynard  
Frances M. McClurkin  
Irene K. McEnerney  
Mark and Connie Mitchell  
Harold T. and Amy Miyamoto  
Martha L. Mullen  
Sam Ng  
Kathleen A. Norris  
Peter B. and Lois Nottage  
Thomas J. and Sally W. Ocask  
Barbara M. Ornellas  
Patricia A. and Thomas K. Oshiro  
Aaron Pamaylaon  
Chris Pearce  
Dennis W. Peters  
Paul E. Pollock and Debra Pollock  
Samuel G. Pooley  
C. Dudley Pratt  
Jean E. Rolles  
Thomas M. Rosenberg  
Sharon E. Rowe  
Patsy K. and Scott K. Saiki  
David M. Saito  
William I. and Beatrice D. Samaritano  
Sandra T. Sato  
William Saunders  
Takeshi and June A. Shimana  
Robert J. and Isobel Spangler  
Jeffrey and Nancy Sue  
Ralph M. Suzuki  
Paul L. and Hiromi Takenaka  
Calvin K. and Kathleen L. Tang

Todd Taniguchi  
Craig Thomas and Susan Scott  
Douglas G. Thorp  
Robert and Laverne Tirrell  
Albert M. Tomei  
Robert Toree  
Arthur A. and Ruth N. Ushijima  
Leslie R. and Annie N. Usui  
Sarah K. Vann  
Craig R. Wall  
Michael R. and Laurie Walsh  
Martha Waterhouse  
Thomas R. Webster  
Victor K. and Beth Weisberger  
Pat and Jim Wiencke  
Kevin B. H. and Elizabeth S. H. Wong  
Ronald Y. and Judy M. Yamamoto  
John Yamane  
James E. and Joyce M. Young  
Walter M. and Cecilia P. Young

## \$250 – \$499

Atlas Flooring, LLC  
Centraloha  
Chinese Christian Assn. of Hawaii  
Construction Associates, Inc.  
EnviroServices & Training Center LLC  
Gilbert Fujiyoshi & Associates, Inc.  
HMSA Provider Services  
Jack Endo Electric, Inc.  
John Child & Company  
Macy's West GIFT Campaign  
Orthopedic Associates of Hawaii LLP  
Palisades Family Community Education Club  
Pearl Harbor Submarine Officer's Wives' Club Charity Assoc.  
Pohai Nani Good Samaritan Kauhale  
Punahou School  
Realtors Networking on Oahu  
Rons Construction Corporation  
Rotary Club of Honolulu Pau Hana  
Royal Contracting Co., Ltd.  
SN Realty, LLC  
St. Peter's Episcopal Church  
Stellmacher & Sadoyama, Ltd.  
Townscape, Inc.  
United Way of Southeastern Pennsylvania  
Unity Church of Hawaii-Diamond Head  
Walter K.H. Kam Charitable Fund  
Wholesale Unlimited, Inc.  
Jean Adair-Leland, Ph.D.  
Thomas L. and Diane E. Adkins  
Henry K. Akimoto and Carol Ho

Akimoto  
Helene and Charles Allen  
Lucy M. Allison  
Katherine F. Anderson  
George Y. Arakaki  
Ira V. Bailey  
Caryl H. Bayless  
K.J. Bell  
James R. Bell  
M.E. and Mary G. Bitterman  
Harry C. Bittenbender  
Sayoko Bodgett-Ford  
Alfred and Dorothy N. Bloom  
Michael R. Bressem  
L. J. Brey  
Robert C. Brooks  
Antoinette G. Brown  
Virginia L. Brown  
Paula K. Bruno  
Cynthia Burdge, M.D.  
Mary M. Burt  
James S. and Phoebe Campbell  
Barbara J. Cargill  
Drucilla Casburn  
Sally M. Chang  
Karen M.L. Chang  
Vena J. and Cedric K. Chang  
Robert K. Chang  
Randy W. G. Ching  
Michael J. Chun  
Edward Y. and Gail A. Chun  
Myrna Chun-Hoon  
Clinton R. and Suzanne S. Churchill  
Michael R. and Sharon M. Coad  
John J. Cogan, M.D.  
Sumako M. Coker  
Leonard W. Couzijn  
Janice C. Crawley  
Joseph Cuarisma, Jr.  
Jean Culbertson  
Paul W. and Dorothy J. Dale  
Arlene K. and Donald C. Davidson  
Charleigh R. Davis  
Donald W. and Cynthia J. Davis  
Robert D. Doleman, (RET).  
Doris L. Domingo  
Mark Doo  
Thomas A. Drazin, M.D.  
Mary D. Duryea  
Richard D. Eber  
Sally H. Edwards  
Mary A. and Douglas A. Embrey  
Paul and Charlene Esaki  
Gerald D. and Monica M. Evans  
Mary Alice Evans  
Peter H. Farstrup  
John and Lorraine Felleisen  
Janis H. Fernandez  
Kenneth D. Fleming  
Petty I. Floyd  
Mary M. Flynn

## DONOR LIST BY CATEGORY

Rodolfo R. and Tricia E. Fontanilla  
Kathleen M. Foy  
Edward D. and Sondra J. Fram  
Ann Freed  
Douglas J. and Helen M. Friend  
Royal T. and Aurora A. Fruehling  
Joanne Fuentes  
David Fujikawa  
Bob and Carolyn Fujioka  
Royce S. and Jane Fukunaga  
Wallace T. Fukunaga  
Edward F. and Grace H. Furukawa  
Clarence and Leonora Y. Galik  
Stephen M. and Andrea S. Gelber  
William G. Gilmartin and M. Casey Jarman  
Antonio and Anna Gino  
William P. and Violet Anne Golden  
Paul Grable  
John Grandinetti  
Christopher Grandy  
Antonius Gunawan  
Colleen Haig  
William R. and Velina A. Haines  
G. Von Hamm  
Hallett H. Hammatt, Ph.D.  
Susan Hays  
Walter M. and Norma T. Heen  
Richard R. and Catherin Heflin  
Lea A. and John Heide  
Derral Herbst  
Stephen Herr and Beth Kupper-Herr  
Steven C. Heywood  
Chris Y. Hirayasu  
Lorraine T. and Gerald Hirokawa  
William C. Howes and Sara L. Collins  
Judy and Kane K. Hui  
Victor Hunt  
Michael P. Ida  
Herbert K. and Jeanette F. Inouye  
Lynn Ishii  
Janell A. Israel  
Noel Jaderstrom  
David M. Jameson  
Eleanor Jamieson  
Robert S. and Susan S. Johnson  
John Jubinsky  
Thomas Y. Kagehiro  
Kilohana Kai  
Christina K. Kalili  
Elaine S. Kawada  
Jacqueline Kellett  
Elspeith J. Kerr  
Donald C. and Iris K. Kim  
Jared Kim  
Kevin G. and Derede L. Kimata  
Robert Y. and June Y. Ko  
Carolyn Koehler  
Dennis S. and Barbara E. Kohara

Laurence N. Kolonel  
Allan M. and Ruth Komatsu  
Margaret Lai  
Heinz O. and Julia H. Lange  
Diane S. Lau  
Brian K. W. Lau  
Chung H. Lee  
Gregory H. Lee  
Samuel K. Lee  
Richard Leman and Donna L. Ching  
Darrell J. and Dana Leong  
Grace C. C. T. Lew  
Dorothy L. H. Liu  
Elsie L. Liu  
Henry S. and Sakae N. Loo  
Henry and Eleanor Lung  
Clarence K. and Catherine A. Lyman  
James F. and Charmain C. Lyons  
Marc J. Manifold  
Ann R. and Gerald G. Marten  
Judith J. Masuda  
Sarah S. and John F. McDermott  
David G. McKellar  
Margaret A. McLeod  
Lee McMillan  
Georgia A. Metzler  
William W. and Marie N. Milks  
Gary L. Miller  
Jay and Leilani Miyaki  
Robert Miyasato  
Fred Moore  
Michael T. Moore  
Marcia I. Moreno  
Dwight K. Morita and Mary Paik  
John A. Morris  
Vincent W. and Carole Mulford  
Ted L. and Thelma M. Murphy  
Jerry and Suzanne Murphy  
Alvin Naguwa  
Harry K. Nakayama  
Clayton J. Nascimento  
Robert Nathanson  
Michael F. Nauyokas  
Audrey Newman and Bill Garnett  
Robert Nichols  
Albert K. Nishikawa  
Emily E. and Paul T. Nishimura  
Susan H. Nishioka  
Wade and Cecile Nobuhara  
Sarah Nordwall  
Joyce K. Okano  
Yukiko H. and Kenneth K. Onoe  
Gabriela Orantez  
Dale J. and Russell A. Ota  
David and Heather B. Oyadomori  
Margaret U. Pahinui  
William Paliracio  
Michael W. Pang  
Kim J. and James M. Pavic-Sheppard  
Ann M. Peters

David K. Poe  
Richard C. Pratt  
Cheryl N. and Tom Prince  
Michelle A. Range  
James N. and Kathleen Reinhardt  
Marilyn A. Requena  
Brenda Reynolds  
Karl A. Rhoads  
Mildred S. Richards  
James and Janis Rodden  
D. H. Roop  
Betty Sasaki  
Jason H. Sato  
David Sayre  
Irwin J. and Barbara J. Schatz  
David C. Schulwitz  
Craig F. and Estrella A. Seese  
Santosh D. Sharma, M.D.  
Debbie Shimabuku  
Gregg A. Shimomura, M.D.  
Kathryn S. Shioi  
Wayne T. Shiroma  
Edward J. and Laurel K. W. Shultz  
Jeffrey H. Sia  
Elvanette E. and Stephen L. Silva  
Lawrence W. and Sandra L. Siu  
Frank F. and Virginia C. D. Smart  
Robert B. Smith  
Daniel C. Smith, M.D.  
Dorothy B. Smith  
Neil H. and Gina M. Smith  
James A. Stanton  
Douglas D. and Joyce H. Stewart  
Walter A. Sullivan  
Stanley T. and Paulette T. Sumida  
Jean M. Swope  
Lois A. Takahashi  
Pat and Abe Takahashi  
Natsue O. and Tadashi Takano  
Gary Y. and Karen Takata  
Gerald H. Takei  
Melanie A. and Ivan Tanaka  
Ellen A. Tangonan  
George and Myrtle Taoka  
Patricia A. and William S. Taylor  
Ray Baker and Joyce Terashima  
Laura Thompson  
Laurie K. Tom, M.D.  
Jean M. and Dennis K. Toyama  
Gordon S. Tsumoto  
Kelli K. Trifonovitch  
Jennifer R. and Keith Tyau  
David Y. Ueunten  
Stanley H. Uyehara  
Mark Van Allsburg  
Katherine U. Wakayama  
Laura E. Warfield  
Lynn I. M. Wells  
William and Iris M. Wiley  
Carlynn Wolfe  
Donna C. Wong  
Lorraine D. Wong

Jacob C. Wroten  
George and Mary Ann Wyman  
Mr. Yalimawai  
Andrew T. Yamamoto  
Stanley Yamaoka  
James M. Yanagida  
Lester and Winifred W. Yee  
Sam K. Yee  
Francis H. and Janet M. Yokoe  
Kelvin K. K. and Betsy Young  
Vernon M. Zane

## \$100 – \$249

A P Baker, Inc.  
AACN Hawaiian Islands Chapter  
Aica Copy Center  
Austin, Tsutsumi & Associates, Inc.  
Bartley Energy Incorporated  
The Brown Bottle  
Chinese Women's Club of Honolulu  
Construction & General Laborer's Union  
Custom Built Cabinetry Inc.  
DIAS AND SONS, LLC  
DS II Audit Services, Inc.  
Dyer International, Inc.  
Eldercare Resources, Inc.  
First Insurance Company of Hawaii Ltd.  
Good Samaritan Episcopal Church  
Harris United Methodist Church  
HAWAII PSYCHOLOGICAL ASSOCIATION  
Hawaii Teamsters Union - Local 996  
HNL Travel Associates  
Honolulu Chinatown Lions Club  
Island Ready-Mix Concrete, Inc.  
Key Crew Production LLC  
KNDI Radio  
Louise Hockadon South Studio  
McKinley High School  
Myles S. Breiner, Attorney at Law  
Network For Good  
Pan Pacific Realty  
Pearl Harbor Kai Kids Care Club  
Phyllis McDonald Trust  
Plastic Design Hawaii  
Professional Image  
The Prudential Foundation  
Matching Gifts  
Quality of Life, Inc.  
The Queen's School of Nursing Alumni Association  
Randall D. Morita D.D.S. Inc.  
Royal Kitchen, Inc.  
St. Andrew's Priory School  
St. John Vianney School  
St. Pius X Church  
Steven Nariyoshi, Realty

## DONOR LIST BY CATEGORY

Systems Technology  
The Gold Corporation  
The Manoa Project, LLC  
The Standard Employee Giving Campaign  
Two Che Design, Inc.  
University of Hawaii Center on the Family  
Verizon Foundation  
Walter P. Thompson, Inc.  
Wesley United Methodist Women  
Windward Realtor Group  
Wong Leong Doo Benevolent Society  
Roland A. and Mary Ann Abregano  
Leilani Adams Maguire  
Andres and Lorita J. Aguillon  
Elizabeth U. Ahue  
Steven C. Ai  
Mildred Ai-Chang  
Patsy O. Akagi  
Gerard K. and Belinda A. Akaka  
Caroline Akana  
Valerie K. Ako  
Earlene M. Albano  
Judy R. Allen  
Richard D. Allen  
Cynthia W. Allencastre  
Noforolu and Manhart I. Alo  
Anthony P. and Gayle N. Ambrosechio  
Deborah Y. Ancheta  
William G. and Lydia E. Andersen  
Stefanie and Ross A. Anderson  
Diane M. Anderson  
Charles V. Anderson  
Lori A. Andres  
Finn Anonsen  
Mary A. Antonelli  
Dexter Aoki  
Joelle S. T. Arai  
Carl G. Arakaki  
Harold S. Arakawa  
Therese M. Argoud  
Heidi Argov  
Timothy R. Armstrong  
Dave Y. and Marsha M. Asato  
Sue Asato  
Kenneth Ash and Patricia Heu  
Kelly Ashburn  
Leah P. Au  
Jane Elizabeth Au  
May Au  
Adrian Q. and Andrea R. Au  
Wyman W. and Elizabeth C. Au  
Richert T. and Maria Au Hoy  
Gerard H.W. Auyong  
Alden and Doris K. Avery  
Clarence Awaya  
Lloyd Y. and Maxine L. M. Baba

Jane C. Bacon  
Miles and Joann Baidack  
Jeannette L. Bala  
Terry Balcomb  
Ann P. Baldwin  
Andrea Bartlett  
Carlina T. Bartolome  
James and Mary Bass  
Cheryl Batangan  
Betsy A. Behnke  
Lisa L. Belen  
Mary Ann M. and James R. Bell  
Byron W. Bender  
Mary Bergmann  
Ann M. Bernson  
Linda R. Bernstein  
Denise C. and Wallace D. Berry  
Paul Berry  
Marie O. Bertelmann  
Peter R. and Valerie L. Besenbruch  
Max L. and Elizabeth A. Besenbruch  
Chaplain Ronald S. Bezanson, USA/RET  
Valerie K. Bill  
Teresa J. Bill  
Joan E. Bintliff  
Donald C. Blaser  
Dianne G. Boons  
Richard S. Borsukiewicz  
Scotty Bowman and Lynnette Apo  
Brian J. and Sena Bozlee  
Horst G. and Patricia M. Brandes  
Peggy Brandt  
WM. Frank Brandt  
Robert W. Brant  
Roger and Felice Brault  
Maxine M. Bray  
Milton Diamond and Connie C. Brinton-Diamond  
Alfred N. Brito  
Ethel L. Broomall  
Margo Brower  
Kingsley and Eunice Brown  
Abby V. Brown-Watson and David L. Watson  
Timothy L. Buell  
Gary P. Buelow  
Eileen K. Bull  
Mark and Margaret Burgessporter  
Martin J. Burke  
Ruby and Joseph Bussen  
Georgette K. Caldeira  
Milafior and William R. Caliedo  
J. Frisbee and Susan Campbell  
Margaret P. Canonigo  
Cecily Capelouto  
Johnathan Carr  
Jennifer L. and James Carroll  
Jacquelin H. Carroll  
Mamiko K. Carroll

Peter A. and Lee Carson  
Daryl Jean L. Carter  
Nellie A. and Pablo Castillo  
Phillip C. and Verda L. Castro  
Helena Cence  
George H. and Hitomi S. Chan  
Annie A. Chang  
Dora D. Chang  
Elaine M. Chang  
Eleanor S. Chang  
Franklin Y. Chang  
Jason K. Chang  
Myrtle F. K. Chang  
Patricia B. Chang  
Patricia Chang  
Martha E. Chantiny  
Barbara Chapman and Tetsuo Miyabara  
Wattie Char-Olson and Franklin Olson  
Todd China  
Frances C. Ching  
Suzanne M. Ching  
Philip H. and Gerry Ching  
Fannie T. and Clarence W. Ching  
Harry Chinn and Joyce Ingram-Chinn  
Jonathan K. and Cora Y. Cho  
John and Lydia Chock  
Clifford W. and Beatrice L. Chong  
Walter G. C. and Sharon K. Chong  
Jenny and Reynold Choy  
Henry and Jessie K. Chua  
Amy A. Chun  
Ariel F. Chun  
Carl and Laurie W. L. Chun  
Claudette N. Chun  
Cynthia S. Chun  
Marisa K. Chun  
Olympia L. and Calvin J. Chun  
Philip S. Chun  
Stewart S. C. Chun  
Twyla Chun  
Catherine Chung  
T. Clark  
James H. Clarke  
Susan K. Claveria  
Frank W. Clayton  
Richard R. Clifton  
George Coates  
Raynelle F. Cobb  
Marc and Elaine Coel  
Henry R. Cohen  
Don and Roz Cole  
Marsha Colotario  
Thelma Conner  
Mary Conniff  
Lawrence J. Connors, M.A.  
Margaret Shirley Connors  
James J. and Irene S. Connors  
Myrna Y. Cooper

John D. Correa  
Kleona Corsini  
Brenda Cowan  
Iris N. O. Craft  
Emi Crandall  
Scott A. Craven  
A. Joel Criz  
R. Dougal and Ann Crowe  
Jane B. Culp  
Maybelle I. Cummings  
Myrna and Richard Cundy  
Delores M. Curtis  
Robert D. and Shirley F. Cushnie  
Samuel S. Dannaway  
Chris Davignon  
John T. and Courtney Davis  
Terry L. Day  
Laurie T. Dechant  
Dale B. Dela Pina  
Charles Dickey  
Joyce C. and Stanley W. Doucette  
Lorraine S. Dove  
Albert L. and Madeleine L. Dreith  
Duke and Diane Du Teil  
Patrick J. and Grace T. Duarte  
Thomas and Mary Duddy  
Lance M. and Leslie H. Dunbar  
Julia Duncan  
Stephen D. Dunn  
Alice and Sam Dunn  
Elaine G. and Thomas J. Dunn  
Mike and Margie Durant  
Charles and Page Dwight  
Jacqueline L. and John Earle  
Samuel R. and Patty C. Eastabrooks  
Verna H. Eddy  
Maurice D. and Anita B. Edwards  
Thad W. and Patricia Ekstrand  
Byron and Pamela A. Eliashof  
Michael and Janet K. Elinski  
Bruce H. and Denise F. Ellinwood  
Sidney C. and Sharyn G. Eng  
Paul Engelbrecht  
Darcy L. Endo-Omoto  
Gladys L. Ernestburg  
Mary A. Evans and John M. Knox  
Terry Ewart  
Epifania Falefa  
Loretta Falls  
Sandra V. Fardal  
Gregory P. and Patricia M. Farstrup  
Gerald D. Faulkner  
Karen B. Fay  
Doris M. Fernandez  
Glenn and Rose Fernandez  
Noreen C. Fernandez  
Alicemarie Fernley  
David B. Fernley  
John R. Fernley  
Robert C. Fernley

## DONOR LIST BY CATEGORY

Joseph J. and Nadine Ferraro  
Patricia A. Field  
Conchita G. Fiesta  
Jollie J. Figuerres  
Kathryn D. Fitzsimmons  
Dolores Foley  
Shirley C. and Glennard Fong  
Cecilia Fordham  
Janet H. Foust  
Eric C. Fowler  
Frances C. Fox  
Violet K. Francis  
Herb H. Frantz  
Christopher and Tertia Freas  
Freeman Family  
Beatrice Freitas  
Reinhard and Isolde Friederich  
William A. Friedl  
Karen L. Fritz  
James F. Fromm  
Marie S. Fujii  
Lillian E. Fujikawa  
Berg H. and Grace E. Fujimoto  
Amy Y. Fujinaka  
Yoshie H. Fujinaka  
Lawrence M. and Richelle M. Fujioka  
Roger S. and Ruby N. Fujioka  
Betty C. Fujioka  
Peter K. Fujishige  
Joseph K. and Helen M. Fujita  
Frederick C. Fukuhara  
Christine S. Fukui, MD  
Francis H. and Alice T. Fukunaga  
Dennis K. Fukushima  
Jean Fukushima  
Lloyd I. Funada  
Gary and Mildred Funasaki  
G. and Susan Furuya  
L.A. and H.L.A. Furuya  
Alvin S. and Karen C. Fuse  
William D. Gaeth  
Gill D. Gajardo  
Evelyn S. Gallagher  
Rene Galletti and Regina Mow-Galletti  
Ana A. and Alan F. Gamble  
Byron and Hilary B. Gangnes  
Alan R. and Yoshiko Gano  
Jerome G. Ganske  
Richard Garcia  
Joyce Garrigus  
Karen L. Gates  
Mark Gavin  
George D. Gedge  
Harriet M. Gee  
Yvonne Geesey  
Don Gelber  
Maryann Gianantoni  
Sybil V. Gier  
The Rev. Dr. Gerald and Pauline Gifford II  
Shinye Gima

William Y. Ginoza  
Carol Ginoza  
Rose Gladstein  
Norman and Gail Glenn  
Roger K. Godfrey  
R. Chris and Debra Godwin  
Judith A. Goldman  
Jo J. Goldsmith  
Laurence B. and Muhardini K. Goldstein  
James K. and Mary L. Gomard  
Stanley M. Gono  
Matilda S. Good  
Lawrence Gordon  
Lawrence A. and Susan Goya  
Arien B. Grabbe  
Kyle A. Grace  
Jeff and Elizabeth Grad  
Marya Grambs and Janet Montgomery  
Robert and Shirley T. Grant  
Estella Grantham  
James B. Graves  
Brian and Teri L. Grayling  
B.W. and Joann M. Green  
Carol Green  
John T. Griffin  
Robert S. Griffin  
Kathy Grindle  
Michael Gross, M.D.  
Katherine Grosscup  
Phyllis M. and Richard Guard  
Franklin D. and Cheng A. Guerin  
Hanif Gulamhussein  
James and Carol Ann Gunn  
Marjorie Haae  
Sandra H. and Raoul Hagen  
Francine E. and Richard Hagstrom  
Philip D. Haisley, Jr.  
Doreen R. and Harold K. Hakuole  
Arvilla E. Hall  
Lyle G. and Sandra L. Halverson  
Peggy H. Hamashige  
Pat M. Hammers  
J.M. Hanashiro  
Stephen K. and Verna Hanashiro  
Muft and Gail M. Hannemann  
Edward Bruce K. Hanohano  
George D. and Evelyn A. Hao  
Shinobu Hara  
A.B. Harada  
Margaret Y. Harada  
Thomas C. Hardy, III  
Paula W. Harris  
Malcom and Rachel Haruno  
Hazel N. Y. Hasegawa  
Martha S. Hash  
Mark and Kathleen Hashimoto  
Alan Hashimoto  
Laura M. Hashimoto  
John M. and Sachie U. Hayakawa

Nancy and Wayne Hayashi  
Florence M. Hayslip  
Audrey Heberer  
Nancy L. Hedlund  
Patricia C. Hee  
Michael Heh  
Jamie Henry  
G.L. and K.K. Heusel  
Betty U. Higa  
Helen Higa  
Joann H. Higa  
Paul and Carrie Higo  
Asa A. and Edna Y. Higuchi  
Allen and Masako Hill  
Walter and Violet Hiranaka  
Robert T. and June N. Hirano  
David K. Hirashiki  
Masako Hirata  
Ed Y. and Harumi N. Hirata  
Gary D. and Caren R. Hisaoka  
Claude K. and Sandra L. Ho  
Carolyn Ho  
Jeanette M. and John A. Hoag  
John A. Hoag  
Lisa Hogg  
Carl L. Hokenson  
Roy A. and Constance M. Holck  
G. Fred and Flora Holland  
Carol J. Holverson  
Charles S. Hong  
Leslie and Carolyn Hong  
Clifford J. and Steph T. Hong  
Irmgard Hormann  
William F. and Dorothy Horn  
John T. Hoshibata  
Maizy O. Howell  
Robert K. Y. and Grace M. Hu  
Holly J. and Mitch Huber  
Mordecai and Mary Hudson  
Gail M. Hudson  
Brian D. Hughes  
Nadine H. Hughes  
Brenda L. Hulihee  
Marianne and Bruce L. Hultgren  
Anne E. Hyde  
Calvin M. and Mildred S. Ichinose  
Barbara K. Ideta  
Bankole and Theresa D. Idowu  
Walter H. and Marion I. Ikeda  
Ashley K. and Keiko Ikeda  
Dorothy M. S. Ildefonso  
Jan Inao  
Kathryn M. Ingle  
Marshall T. and Ardine A. Ingraham  
Dean Iraha  
Gregg K. Isara  
Thomas T. Ishimitsu  
Craig N. Ishizaki  
Mihoko E. Ito  
Bert K. and Sunee Itoga  
Melvyn T. and Gladys K. Iwaki  
Noboru Izumigawa

Colleen H. Izutsu  
Christine S. Jackson  
Laura N. Jamieson  
Martin J.P. and Terry D. Jaskot  
Capt. and Mrs. Randall E. Jaycox  
Harold E. Jensen  
Gary K. and Rhoda E. Johiro  
Lynne Johnson  
Rex D. and Virginia F. Johnson  
Lenore S. Johnson  
W. B. and Cynthia M. Johnstone  
Judy A. and David H. Jones  
Lloyd E. and Janet K. Jones  
Royce Jones  
Edward Jurkens  
Joyce M. and Richard M. Kabasawa  
Carla K. and Reuben Kaio  
Ruth T. Kajikawa  
George and Miyako Kajiwara  
Anna K. Kajiwara  
David Kam  
Clayton A. Kamida  
Ethel and H. Kamemoto  
Ray and Virginia I. Kamikawa  
Eugene H. Kamimura  
John B. Kampfer  
Myrna R. Kanemoto  
Edward and Marcia Kaneshige  
William K. and Kathleen K. Kaneshige  
Albert S. and Ellen S. Kaneshiro  
Arthur T. Kaneshiro  
Kelvin K. and Kumiko Kaneshiro  
Morimasa and Myrtle Kaneshiro  
Crystal Kapua  
Ted Kashiwamura  
Jane H. and Daniel Katayama  
Atsuko O. Kato  
Hisayo Katsumoto  
Robert S. Katz  
Kooi Sim S. N. Kau  
Ted S. and Dana T. Kawahigashi  
Catherine and Steven Kawamura  
Melvia C. Kawashima  
Teruo and Kiku M. Kawata  
Miles S. and Myrna L. Kawatachi  
Rodney M. and Sharon W. Kazama  
Carol C. Keane  
Donald K. Keawe  
Charles J. and Beverly Kever  
Margaret C. Keller  
Mary J. Kelly-Kim  
Marcia J. Kemple  
Eaton M. Kempshall  
Averie N. and Jeffrey Kenery  
Colin Kennedy  
Paul S. and Rebecca Kennedy  
Roger T. and Annette L. Kent  
Nancy Kern  
William Kern  
Keoki M. Kerr

## DONOR LIST BY CATEGORY

Emily Khaw  
Lynette F. Kida  
Ann Kilroy  
Adele N. Kim  
Barbara Kim  
Calvin D. and Joyce K. Kim  
Rodney Kim  
Henry King  
Laurel King  
Selwyn King  
Masuo and Alice Kino  
Ronald and Linda Kishimoto  
Robert L. and Adelaide M. Kistner  
Eleanor S. Kitagawa  
Terri M. Kitamori  
Mark K. Kitamura  
Emi Kitashiro  
Elizabeth and Gerald K. Kitkousky  
Sherene S. Kiyabu  
Richard L. and Barbara Klemm  
Simon and Lorraine Klevansky  
Mary Ann and R. Peter Knerr  
Vernon A. Knight and Judith Buffington  
Frank A. and Angelique Knight  
Judith S. Kobashigawa  
Ann H. Kobayashi  
Christine M. Kobayashi and John E. McComas  
Harry K. and Ruby Kobayashi  
S. Kobe  
Nancy C. Koelper  
Michael T. and Carolyn S. Koga  
Louise N. Kojima  
Dorothy K. Kokubun  
Calvin T. Komata  
Herman Kon  
Cary K. Kondo  
Sumiye E. Konoshima  
Frederick M. and Barbara M. Kooker  
John Koon and Donna M. Revard  
Wendell K. and Melba Kop  
Maria L. Kostylo  
Marc A. Kowalski  
Jean K. and James Kubo  
Earl Kubota  
Henry S. Kuniyuki  
Bob O. Kuniyuki  
Conrad and Jane Kurahara  
June Kuramoto  
Amy Kuraoka-Goo  
Stanley M. and Helen K. Kurashige  
Kevin R. Kuroda  
Dora and Robert Kuroda  
Clarence T. and Michiko Kuwahara  
Sybil S. Kyi  
Bernard E. La Porte  
Mr. Laffleur

James C. and Ethel W. Lam  
Susan Lamb  
John M. and Geri I. Lambert  
Lilian L. Lander  
Betty Lou Larson  
Bonnie V.I. Lau  
Griffith L. Lau  
Ronald D. C. Lau  
Shigeko Lau  
Thomas Lau  
Laurence Lau and Barbara Schwaiger  
Rodney S. and Anna W. Y. Lau  
James T. and Hai-luen Leavitt  
Terese Leber  
Marilyn B. and Sam S. H. Lee  
Robert M. and Jean S. Lee  
Samuel S. and Betty T. Lee  
Frederick K. and Helen S. Lee  
David K. and Baerbel M. Lee  
Winston W. Lee  
Sharrie Lee  
Curtis D. Lee  
Robert S. H. Lee  
Russell D. and Carol C. Lee  
Elsa C. Lee  
Robert C. and Sylvia C. Lee  
Patricia C. Lee  
Ina M. Lee  
Greg LeLesch  
Norman and Ruby Len  
Katherine G. Leonard  
Gilbert J. and Sylvia L. Leong  
Adeline W. Leong  
David A. Lerps  
Robert F. and Anna M. Lessard  
Steven Levinson  
Abel S. Lew, III  
Fred R. and Misako T. Lewis  
Michael Lieberman  
Liza Liew  
William Liggett  
Michael S. and Joyce I. Lighthill  
Helen Y. and John M. Lind  
Dennis B. Lind, M.D.  
Clifford P. and Gail S. Lindsey  
Lois J. Lingeman  
Cheryl K. Lippman  
Jacqueline L. Loo  
Violet S. Loo  
Sandra Y. Loo-Chan  
Robert M. Lovely  
Marvin and Miki Luckfield  
Joseph K. Luczkow  
Susan Luehrs  
Walter S. Lung  
Paul and Kaoru Lyddon  
Frances Lyons, Ph.D.  
Duncan Macdonald  
Shellee Machado  
Jiho and Violet A. Machida  
Donald W. Mackay  
Warren T. and Karen H. Maeda

Eugene A. and Mary Anne Magnier  
Margie M. Maket  
Sumi Y. Makey  
Reginald and Beverly Maldonado  
Peter Manicas  
Sandra M. Mann  
Roy T. Manzoku  
Kwan S. Mao  
David M. Mar  
Teri E. Marcus  
Beatrice J. Marcus  
Grant E. Marcus  
Suzanne Marinelli  
Melanie G. Marshall  
Myles and Erma Marshman  
Gina Marting  
Harriet H. Maruyama  
Arthur J. and Yvette Y. Maskrey  
Judith A. Mason  
Douglas and Gisele Massey  
CDR. and Mrs. David W. Masters  
Thomas P. and Tomiko A. Mastin  
Ronaldo C. and Miriam K. Mata  
Mary Jo and Bruce Matheson  
Barbara S. Mathews  
Gerald B. Mathias  
Roy T. and Mary Matsuda  
Roy S. and Elizabeth B. Matsumoto  
Paul T. and Dianne C. Matsumoto  
Ronald K. Matsuo  
Stephanie Matsuoka  
Kenneth and Diane E. Matsuura  
Violet S. and David K. F. Mau  
Rick and Monique Maxey  
Frances L. Maxwell  
Mahina T. Maxey  
Julia J. Mayne  
Sumie F. McCabe  
Mark McCabe  
Stephen J. and Dani L. McCarthy  
Stephen and Patsi P. McClaran  
John A. McCormick  
Helen D. McCorrison  
John S. and Betsy McCreary  
Elizabeth McCutcheon  
Robert S. and Mary M. McEldowney  
Harriet A. McFarlane  
James R. and Patricia McGhee  
Marilyn T. McGovern  
John W. and Mary F. McGrath  
Mavis L. McGurn  
Maureen L. and Bernard K. McKeague  
Rusty Mckee  
Samuel McKeown  
Jamie Mcmillin  
Ian McWilliams  
Theodore Meeker  
Kimie Meguro  
Toshiko Menté

Judith Meyer  
Meleanna Meyer  
Maximo A. Mida  
Susan Migita  
James and Bernadette M. Milbury  
Anne S. Miller  
Clifford E. and Renette Miller  
Colleen and Wayne Minami  
Cody and Myrna Minatodani  
Lorraine L. Miranda  
Barbara H. Mitchell  
Michael Mitsukawa  
Edward K. Miwa  
Sarah D. Miyahara  
Florence Miyahira  
Gary S. Miyamoto  
Mildred M. Miyasato  
Kazue Miyashiro  
Sally S. Miyashiro  
Sharyn L. Miyashiro  
Yoshio and Janice A. Miyashiro  
Steven Mizokawa  
Mary L. and Donald E. Monroe  
Brendan Monroe  
Margaret L. Montgomery  
Ernest L. L. and Linda D. Moo  
Monique Mook  
Janis Mookini  
David C. Moore  
Willson C. and Sally C. Moore  
D.M. and S.D. Morales  
Judith A. and Ramsay Mori  
Aileen A. and Roy A. Moriguchi  
Deborah K. Morikawa  
David Moriwaki  
Keith A. Morrill  
Jenna E. Morris  
Mary J. Morrow  
Ronald A. and Kathleen K. Morton  
Art and Nancy Moss  
Milton M. and Doreen N. Motooka  
Etsuko N. Motooka  
Nancy Mower  
Martha S. Mueller  
Thomas Mui  
Franklin K. and Mildred M. Mukai  
Douglas and Betty N. Mukai  
Mary Mulder  
Eleanor B. Muller  
Bruce C. Mundy and Donna Bair-Mundy  
Lynn N. Muneno  
Gary T. and Naomi T. Murakami  
Robert K. and Sue S. Muranaka  
Walter and Karen Muraoka  
Fred T. and Ruby H. Murata  
Margaret Murchie  
Estelle W. Murphy  
Esther G. Murphy  
Joseph W. and Beverly J. Murphy

## DONOR LIST BY CATEGORY

John F. Murphy  
James B. Murphy  
James S. Myers  
Elsie H. Nagahiro  
Claude T. Nagaishi  
Charles R. Nagamine  
Russell S. Nagata  
Roy M. and Shirley S. Naito  
Kazutoshi and Joyce M. Najita  
Nelson K. Nakagawa  
Laraine T. and Carrie Nakagawa  
Charles P. Nakagawa  
Peter N. Nakagawa  
Lee G. Nakahara  
Dora T. and Dean N. Nakamaru  
Samuel I. and Jolene R. Nakamatsu  
Dennis S. and Arlene M. Nakamoto  
Marc K. Nakamura  
June Nakamura  
Carl T. Nakamura  
Lyle Nakamura  
Harris and Winona Nakamura  
James K. Nakamura  
Martha T. Nakamura  
Gordon M. Nakano  
Carl Nakao  
Bruce M. and Vanina Nakaoka  
Edith A. Nakashima  
Norman Nakasone  
Gladys T. Nakata  
Janice S. Nako-Piburn and Don Piburn  
Wendy Nakayama-Therault  
Stephen Nash  
Beverly Neese  
James and Norma Nekota  
Elizabeth M. Nelson  
Robert W. and Pamela J. Nemechek  
Jennifer M. Neuburger  
Marion E. Newman  
William F. Nichols  
Karen Nielsen  
Ruth U. Ninomiya  
Wayne Y. Nishie  
Richard G. and Jocelyn I. Nishihara  
Gary T. and Marie M. Nishikawa  
Alan T. Nishimura  
Paul T. Nishimura  
Barbara Nitsche  
Edwin K. Nitta  
J. Dennis and Lynn Nolan  
Bonnie M. Norris  
Gregory E. Northrop  
June R. Nuessle  
Joseph V. O'Donnell  
Sharon O'Hara-Katres  
Katrin L. O'Leary  
Joe and Kitty O'Reilly

Janet C. Oasa  
Miles and Jill Oda  
Jay H. Ogawa  
Roy S. Ogawa  
Nancy W. Ogburn  
Hilda Ohama  
Richard H. Ohara  
Irene F. Ohashi  
Frances A. Ohira  
Darcy E. Oishi  
Margaret F. Ojima  
Steven T. Oka  
Scott H. Okamoto  
Alan J. and Charlene Okamura  
Deborah L. Okamura  
Grant K. and Vera K. Okamura  
George Okano  
Nikki N. H. Okazaki  
Joel R. Okazaki  
Raymond M. Okimoto  
George M. and Rose Okinishi  
Pearl T. and Gary Okino  
Donna and Garrett Okubo  
Sada Okumura  
Rogelio E. and Carmelia V. Olegario  
Bradley C. and Mary M. Oliver  
Carlos A. Omphroy and Kristen Brown  
Kathleen Ong  
Joan W. Oren  
Lauzanne and Marcus Oshiro  
Kenneth K. Otake  
Chester H. Otani  
Katharine C. and Robert H. Owen  
Timothy T. and Tracy L. Owens  
Bob and Carol L. Owens  
Stanley N. Oyama  
Henry T. and Joan M. Oyama  
Dennis O. Pacht  
Mr. and Mrs. John Paer  
Frederick Paine  
Russell Pang  
Linuce C. and Jeanette M. Pang  
Carolyn S. Pang  
Loretta O. Pang  
Marilyn Park  
Judy Park  
Birgitta Park  
Jacqueline Parnell  
Gene J. and Shirley T. Parola  
David and Joyce Patrick  
Cathy K. and John K. Payne  
Ramsey Pedersen  
Neuman and Trevina Pei  
Carl P. and Beverly K. Penaranda  
Russell O. and Virginia H. Perkins  
Robert G. and Patricia C. Peters  
William S. and Barbara L. Petti  
Roger A. Pfeffer  
Nancy P. and Nancy Pflueger  
Kathleen Phelan

Robert S. Phillips  
Carole A. Pikulski  
Martha E. Pilliard  
Annette M. Platt  
David V. Polhemus  
Ryan A. Porell  
David J. Porteus  
Rebecca L. Postema  
Bill Potter, Jr.  
Thomas J. Powell  
Duane and Sarah Preble  
Carl Price  
Redfield D. Proctor  
Henry Pundyke, Jr.  
Mike and Jana Ramia  
Judith Ramseyer  
Laura K. and John D. Rand  
Edward G. and Ernestine M. Rapoza  
Manjit K. Reddick  
Glenn A. and Pauline M. Rediger  
Judy Reid  
Robert R. and Delores S. Reiersen  
Arthur and June Reinwald  
Karen P. Reynolds  
G. Manning Richards  
Robert Richmond  
John W. and Marilyn Rigterink  
Marie E. Riley  
Thomas and Sydney Ritchie  
Barbara Ritchie  
Frederica M. Rittmeister  
Justin Rivera  
El Dora K. and Allen C. Robertson  
Sarah Robinson  
Elizabeth G. Rodenbeck  
Ronald D. and Joan M. Ross  
Alexander and Colleen P. Roth  
Judith Rubano  
Terry Sagawa  
George N. Saito  
Kim A. Saito  
Kay K. Sakai  
Brian L. Sakamaki  
James I. and Maria E. Sakoda  
Glenn M. and Beverly Ann Sakuda  
Nami T. Salz  
Roy K. and Mei Sam  
Susan Sanders  
Suzan S. Santiago  
Patricia A. and Francis T. Santos  
Aracile C. Saromo  
Thomas and Mabel Saruwatari  
Melvin S. and Allison M. Sasaki  
Barbara S. Sasaki  
Andrew K. Sato  
Earl T. Sato  
George E. and Marion K. Sato  
Linda L. Sato  
George and Joycelyn Saunter  
Hisayo Say

Ramona C. and Jeffrey C. Sayre  
Maureen Schaeffer  
Charito T. Schaeffer  
Deborah G. Schatz  
Kenneth A. and Sun C. Schubert  
James K. and Bettye P. Schuler  
Leilani Schuman  
Henry J. and Linda J. Schwartz  
Andy L. Schwartz and Suzie Hayes-Schwartz  
Paul J. Schwind  
Robert J. Schwingen  
Nelson J. Secretario  
Howard and Mary Jo Segawa  
James M. and Patricia M. Severson  
Andrew S. Sham  
David K. Shak  
Jagdish and Miriam Sharma  
Richard Shema  
Helene "Sam" Shenkus  
Dorothy G. Shepard  
Paul T. Shigaki  
David Y. and Susanne Shimabukuro  
Dawn M. Shimata  
S. Don and Chiyoko Shimazu  
Wesley D. Shimazu  
Gaylen and Valerie Shintaku  
Monique Shirai  
Hiromi Shiramizu  
Allen T. and Jane Shiroma  
Carrie Shoda-Sutherland  
Julian Showkeir  
Farah Siah  
Gerald Siegel  
Cynthia R. Silva  
Wenona P. and Milton D. Simao  
Theodore Simon, M.D.  
Edwina L. Siu  
Ronald C. and Patricia K. Siu  
Robert A. Skillman  
Barbara J. Smith  
Bradstreet W. and Rebecca L. Smith  
Dorothy L. Smith  
Douglas C. Smith  
Frank W. Smith  
Patricia Ebel Smith  
Patricia K. Smith  
David W. and Anna Sneed  
Bruce and Linda K. Soll  
Peter and Mary Song  
Raynard C. and Cheryl D. Soon  
Kathleen A. Souza  
Joan R. Souza  
Joshua W. Stanbro  
Bob Stanfield  
Marian J. Stanley  
Aito and Jamie C. S. Steele  
Kenneth H. and Barbara B. Stehouwer  
Keith J. and Polly Steiner  
Barbara B. Stephan

## DONOR LIST BY CATEGORY

H. Howard Stephenson  
John T. and Elizabeth B. Stickney  
Louise S. Storm  
Eugenie B. and John C. Stowe  
Ralph K. Stueber  
Marilyn M. Sue  
Dean T. and Wanda C. Sueda  
Edward S. Suematsu  
Clyde E. Sumida  
Kenneth N. Sumida  
Walter and Mary L. Sur  
Arleen A. Suzuki Arakawa  
Richard W. and Laura Y. Swanson  
Mike Swenson  
Les D. and Delle S. Swindale  
Frederick T.  
Mildred K. Taam  
Kiyoshi Taba  
Milton M. Taba  
Chieko Tachihata  
Janet C. Tachino  
Akiko Tajima  
Mildred Y. Takaki  
Fred T. Takakuwa  
Alan T. Takamoto  
Eric K. and Jadean L. Takao  
Frederick H. and Virginia Takara  
Walter M. and Dolly S. Takeuchi  
Linette Tam  
James K. and Linda W. Tam  
Jan and Owen K. Tamamoto  
May E. Tamashiro  
David N. and Jocelyn R. Tamashiro  
Richard Y. Tamashiro  
Ray Y. and May S. Tamura  
Leony L. Tamura  
Andy Tan  
Ann Tanabe  
Russell T. and Janet S. Tanahara  
Joseph Y. Tanaka  
Stella S. Tanaka  
Benjamin S. Tanaka  
Michael K. Tanigawa  
Hisao T. Taniguchi  
Andrew S. and Virginia M. Tanji  
Henry M. and Doreen Y. Tanoue  
Michael N. and Claire M. Tanoue  
Vernon and Cynthia Taomae  
Candace K. Tasoe  
Linda Tauotaha  
Justus F. Taylor  
Robert W. and Marlise Tellander  
Ronald K. and Dorothy C. Tenn  
Walter Tennant  
Larry Teske  
Jane E. Thomas  
Germaine C. Thompson  
W.L. and Margaret R. Thrailkill  
Carole M. Tibayan  
Alan D. and Constance C. Tice  
Michael H. and Joanne R. Tice

Jeffrey and Cathy Tilley  
Barbara B. Tilley  
Charles K. Tilton  
Thomas and Diana C. Tizard  
Deirdre K. Todd  
Rosalie M. Toguchi  
Carole H. Toguchi  
Allan H. Toh  
Barbara L. Tom  
Herbert K. and Judith M. Tom  
Karen K. Tom  
Mabel Tom  
Patsy H. Tom  
Lowell H. Tom  
Coleen S. Toma  
James T. and Doris Y. Tomita  
Bruce H. Tornquist  
Allan S. and Betty S. Toroki  
Amy Tousman  
Murray E. and Pamela Towill  
Susan S. Toyama  
Tsuyoshi Toyooka  
Henry J. and Rosella Trautwein  
Cheryl A. and Gerald R. Treiber-Kawaoka  
Gregory J. and Beverly J. Trifonovitch  
Maisie W. S. Tso  
Wayne and Lise Tsue  
Kent K. and Jean T. Tsukamoto  
Allen M. Tsukamoto  
Randi Tsushima  
Richard H. and Atsuko Tsuruda  
Toni Tudor  
E. James and Cynthia Turse  
Edmund and Gail Tuthill  
Robert A. Tylicki  
Marc D. Udoff  
Brian K. Uechi  
Carolyn and Goro Uehara  
Joyce J. Uehara  
Dorothy and Stan Umeda  
Kenneth M. and Janet T. Umemoto  
Ruth C. Urago  
Maxwell M. and Sarah P. Urata  
B. Uy  
Joyce Y. Uyehara  
Lori Y. Uyehara  
Harry M. and Jane R. Uyema  
Robin Y. Uyeshiro and Donna Leong  
Gilbert and Thelma Valentine  
Noreen M. and Richard H. Van Horn  
Diane M. Vanderzanden  
David and Frances Vaughan  
Jessica Villapando  
Dominica and Jay J. Villiaros  
Betty M. Vitousek  
Dung and Grace Vo  
Betty Y. Wakai  
Betty S. and Ronald Wakatsuki

Nancy J. Walker  
Phyllis Walker Pender and Frank M. Pender  
Ron and Charlene Wall  
Eileen Wallenhorst  
Lorilyn F. Wandasari  
Sadie F. Watanabe  
Faye A. Watanabe  
Ronald K. Watanabe  
Rev. Msg. Terrence Watanabe  
Derrick and Sandra Wataoka  
Tekla and Charles A. Weber  
W. Warren Weldon  
Beverly A. Wellman  
Ann M. and Frank W. White  
Marsha L. White  
Carol B. Whitesell  
Nora R. Whitford  
Charles and Jeanne Wichman  
Wilma K. Wilkie  
Ann G. Williams  
Craig A. Williams  
Jan E. Williams  
Kano Williams  
Harwood D. and Nancy H. Williamson  
Eleanor and Horace Williston  
James S. Williston  
Lei S. Wilmoth  
Elissa K. Wisenberg  
Robert and Betty Wo  
Jenni T. Wong  
Lavina H. M. Y. Wong  
Warren F. Wong, M.D  
Genevieve G. and Thomas P. Wong  
William K. Wong  
Kiman Wong  
Dennis C. and Linda H. Wong  
Ellen H. Wood  
Diane Wood  
Dawn M. Woolsey  
Howard Wright  
Marcia D. Wright  
Jane M. Wylie  
Richard and Kumiko I. Yaginuma  
Suemi N. Yamada  
Darrell R. Yamagata  
Mitsuko and Bert Y. Yamaguchi  
Debra T. Yamaki  
Myles T. and Iris E. Yamamoto  
John H. Yamamoto  
Jon J. Yamamoto  
Lillian A. Yamanaka  
Todd R. Yamanaka  
Ethel H. Yamane  
Beatrice T. Yamasaki  
Richard I. and Fukuko Yamashige  
Sharlene C. Yamauchi  
Franklin K. Yang  
John Y. and Sarah S. Yano  
Terumitsu Yasuda

Clarence K. and June K. Yee  
Lauren J. Yep  
Elijah Yip  
Lane and Sheila M. Yoder  
Roy K. and Eleanor M. Yogi  
Elbridge T. Yogi  
Ronald Yokota  
Alan K. Yonemori  
Walter and Frances Yoshimitsu  
James S. and Harriet O. Yoshimori  
Bill Yoshinaga  
Harold and Irene Yoshizaki  
Donald K. and Judi A. Young  
Norman K. and Carol S. L. Young  
Jason and Richlyn Young  
Jacqueline N. and Sammy K. Young  
Virginia and Bruce Young  
Hung L. Young  
Frederick A. and Eva L. Zane  
Mary K. Zarbaugh  
Henry T. and Ursula F. Zerbe  
Joseph T. Zilliox

## \$1 - \$99

Beach Chic  
CC Repair & Maintenance Service, Inc.  
Cox Radio  
Dalmally Realty, Inc.  
DBA Edgar Audio & Electronics  
Hawaii USA Federal Credit Union  
Holy Cross Episcopal Church  
Honolulu Barber School  
International Brotherhood of Electric Workers  
Island Insurance Foundation  
Izumo Taishakyo Mission of Hawaii  
James Campbell High School  
Jonathan L. Kim, Inc.  
JTJL Business Services LLC  
Kaimana Realty  
Kula's Plant & Yard Service  
Yardbusters  
Leis by Ron Inc.  
Little Friends Pet Care Inc.  
Macy's Foundation  
Mail's Lei Stand  
Marsha Nadalin Salon And Spa  
McGuire Construction, Inc  
Mid-Pacific Chapter #10 Order of the Eastern Star  
Mililani Middle School  
Moanalua Community Church  
Nahiku Church  
Nahiku Congregational Church  
Naoe & Co.  
O.A.V.  
Oceanit Laboratories  
Paradise Carpet and Tile, Inc.

## DONOR LIST BY CATEGORY

Phoebe Lau Realtor  
Properties of the Pacific, LLC  
Robert's Refrigeration Services Inc.  
Rock Star PR  
Sandwich Isles Restaurants, Inc.  
Silkwood Wholesale, Inc.  
St. John's Women's Guild  
Takakuwa Consulting Group LLC  
The C3 Company  
The Holy Cross Episcopal Mission  
The Law Office of Gary B.K.T. Lee  
Tomily LLC  
Toni L. Lathrop-Lee CLU  
TSI - Team 110  
Wong Kong Har Tong  
You've Got A Friend Ministries  
Carl T. and Sandra L. Aaron  
Michael S. and Helen N. Abe  
Myron N. Abe  
Matsue Abe  
Lori Abe  
David and Kelli Trifonovitch  
Nancy Ables  
Joelle N. Abo  
Karin Abrams  
Brian and Patricia C. Aburano  
Juanita Acosta  
Edmund C. Aczon  
Hitoye M. Adams  
Eric L. and Gloria J. Adams  
Lynette P. M. Adams  
Jon C. and Joy M. Addiss  
Jeanne C. Aeby  
Elaine N. Agena  
Aurora A. Aglugub  
Julita A. Aguon  
Herbert Ah Yo, Jr.  
Barbara J. Ah-Mau  
Mervin Y. and Doris Y. Ahana  
Peter Ahlo, Jr.  
Henry Ahn  
Masao and Mary E. Aihara  
Robert K. Aisaka  
Doris Y. Akahoshi  
S.P.K. Akaka  
Sarah E. K. Akaka-Truong  
Carey M. Akamine  
Thomas and Lillian Akamine  
Marion Akamine  
Shane Akamine  
Russell L. Akamu  
Janette C. Akana  
Clarence and Abby G. Akau  
Kathleen Y. Akau  
Leanne Aken  
Patricia P. Aki  
Velma and Robert Akinaka  
Jaime L. Akuna  
Maximo C. Alania  
Phyllis S. Alden

Maximo F. Alejandro  
Barbara A. Alexander  
Maridell B. Alexander  
Carolyn A. Alexander  
Norene J. Alexander  
Larry J. Allar  
Marian R. Allard  
Kevin and Wendy Allex  
Harold W. and Gladys C. Aloia  
Donnie Alporque  
Florencia D. S. J. Alvarado  
Donald S. Amano  
Mikael Amistoso  
Calvin K.C. Amoy  
Collette K. Andersen  
Robert E. and Beth Anderson  
Ernest G. Anderson  
Eileen and Clayton L. Anderson  
Eleanore N. Anderson  
Ruthadell Anderson  
Kathy S. Anderson-Low and Richard N. Low  
Anna N. Andrade  
Rita Andrade  
Bonnie F. Andrew  
Phoebe H. Andrews  
Barbara A. Andrews  
Leo R. and Gail Andrus  
Charles T. and Marilyn B. Ane  
David Angdor  
Stanley M. Aniya  
Alan S. Aoki  
Leatrice H. Aoki  
Lloyd and Jean Aoki  
Harriet M. Aoki  
Arthur E. Aoki  
Deborah A. and Christian R. Aona  
Leatrice Aono  
Raymond T. and Lucille C. Aono  
Shirley E. Apo  
Marylin Apuya-Altman  
Victor Y. Aragaki  
Dorothy F. and Gilbert M. Aragaki  
Merle Miyo Arakaki  
Norman S. and Glenna K. Arakaki  
Wilma B. S. Arakaki  
Vivian M. Arakawa  
Jacalyn Y. and Albert Arakawa  
Kevin K. and Susan A. Araki  
Benson H. and Lorraine S. Araki  
Akio and Chiyoko Araki  
Mark and Pattariya Arbeit  
Leanne Arciero  
Raquel C. Arellano  
Gerry Arellano  
Richard A. and Caren S. Argenzia  
Pamela J. and Martin Arinaga  
Roy Arita  
Nicole Ariyoshi  
Dorothy N. Arizumi

Gene C. Armacost  
Sarah Arneson  
Bobi O. Arnold  
Thomas E. and Loretta K. Arnold  
Marian B. Arnott  
Ethel M. Arola  
Lynn Arriola  
James H. Arscott  
Patricia M. Asano  
Lawrence K. Asano  
Walter H. Asano  
Kenneth Asato  
Darcy Y. Asato  
Mary Pat Ashby  
Bruce Ashford  
Roy C. Ashitomi  
Robert C. and Amy C. Ashton  
Philip and Debra Asuncion  
Ramin Atabaki and Sara Nunes-Atabaki  
Virginia C. and Harry L. S. Au  
Thomas Y. Au  
Robert H. L. Au  
Philip and Carol Ann Au  
Donald T. and Peggy C. Au  
Robert K. S. and Dolores Y. L. Au  
Garry and Melissa Au  
Dean and Janelle Au  
Sharon Au  
Andre Auw, Ph.D.  
Patricia A. Avery  
Kozue N. Awaya  
Paul D. and Carol G. Awong  
Perry L. and Laura A. Ayers  
Shigeyo Baba  
Herman and Esther Baba  
Edward T. and Janice S. Baba  
Alan E. Babcock  
Alfred and Nalani A. Badua  
Donna G. Bair-Mundy  
Bennett D. Baird  
Lionel Baker, Jr.  
Pauline R. Baker  
Marlene M. Baker  
Tanina M. Baker  
Leonida B. Balais  
Norman S. and Venkataraman Balaraman  
Evelyn E. Balatico  
Alfred Baldomir  
Sylvia W. Baldwin  
Eileen E. and Raymond Bali  
Ely B. and Santos A. Balisa  
Phuong B. Ball  
John L. Ball  
Luisa Balmilero  
Maria L. Banao  
Vera D. Bangan  
Irene and Benjamin Baniaga  
Rosalina Baqui  
Amy M. Baran  
Robert H. and Elizabeth E. Barry

Blyth A. and Candelario L. Bastatas  
Brian P. Bauer  
Norberto Baysa, M.D.  
Malie Beach-Smith  
Bert D. and Stacie A. Beaman  
Peter C. Beamer  
Beatrice Beeson  
Roxane Bega  
Holly Bell  
Marian Benham  
Christopher Benjamin  
Ann E. Benjamin  
Rae I. Benn  
Alta R. Bento  
Stephen J. and Lee E. Bepko  
Christine R. Bergado  
James L. Berlin and Ellen A. Balsley  
Maribel Bernabe  
David A. Bernstein  
Robert J. Berssenbrugge  
Mark A. Berthold and Eriko Hayakawa  
Mary Bertolino  
Ryan Best  
Clifford P. Betonio  
Melody L. Beyma  
Mary F. and L. H. Bibby  
Francine Y. Bidal  
Leslie L. Bingham  
Janet M. Bixler  
Janet Black  
Rhonda Black  
Linda J. Blagrove  
Donald C. Blanton  
Alexandra Bley-Vroman  
Kimberly Blucher  
Brad Blucher  
Gregg Blucher  
Stephen T. Boggs  
Emma J. and Marcus R. Boland  
John C. and Frances T. Bomke  
Ernesto E. Bonilla  
Barbara F. Bonnardel  
Michael S. Boohar  
B.J. Borden  
Dale K. Bordner  
Joseph W. and Celeste C. Borges  
Andrew R. and Ana Maria Bouck  
Florence Y. S. Boulware  
Glen C. Bowman  
Edward Boyd  
Mary L. Boyd  
Ronald Boyer  
Ronald E. and Sarah E. Boyle  
Jane L. Boynton  
Elli Brady  
Mark E. Brasher  
Paul and Dorothy Brennan  
Adelaide A. Brenner  
David L. Bright

## DONOR LIST BY CATEGORY

Maggie A. Brodahl  
 Robert A. and Alice K. Broderick  
 Michael Broderick  
 Bonnie Brown  
 Douglas and Kaori A. Brown  
 Ronald Paul Brown  
 Sean K. Browne  
 Sheryl A. Bubier and Philip J. Obado  
 Mildred G. and Albert T. Buckmaster  
 Pamela Buenconsejo  
 Sibyl M. Bugarin  
 Charlotte R. Bugarin  
 Devin and Justine Buick  
 Jocelyn I. Bumanglag  
 Sherry Bumatai  
 Gloria R. Bunao  
 Bess Burke  
 Doris M. Burnette  
 Diane E. Burton  
 Sally E. Butement  
 Laurabelle M. Butler  
 William T. and Agnes Y. Butler  
 Jared W. and Cathleen Butler  
 Denise Buto  
 Kerry L. Byun  
 Anthony A. and Joelle Y. Cabiara  
 Elmer J. Cabico  
 Rosalind Cabotaje  
 Maria K. Cabral  
 Miriam K. Cabral  
 Daniel M. Cabrera  
 Thomas G. and Patricia Cabrinha  
 Joann Cailing  
 Lucy R. Cairés  
 Val Tina V. and Loureana V. Calaycay Oishi  
 Maya Caldwell  
 Daniela Calimpong  
 Lionel E. and Elizabeth B. Camara  
 Mary M. Cambra  
 Sharon L. Cambra  
 Naomi S. Campbell  
 Marion Campbell  
 Bernie Campbell  
 Johnny T. Cantillo  
 David E. Cantor  
 Elmer and Brigida Cariaga  
 Julio C. and Doreen V. Carino  
 Kerryn J. Carland  
 Louis S. Carmona, USA (Ret.)  
 Dante K. and Olan Carpenter  
 Brenda Carpenter  
 Jarrett F. and Lou Esther S. Carr  
 Jean T. Carroll  
 Shannon B. Carroll  
 Claude K. Carvalho  
 Frederick M. Casciano  
 Alexander J. and Estelle K. Cashman  
 Thomas Castro  
 Ramon C. and Rosita Casupang  
 Daisy L. Catalan  
 Elisabeth Cattaneo  
 Paz and Felipe A. Celebrado  
 Pablo Cercenia Sr.  
 Pablo Cercenia, Jr  
 Hayley Cerit  
 Peter Cervantes  
 Anne Chamness  
 Richard A. and Caroline K. Chan  
 Susan Chandler  
 Clifford and Audrey Chang  
 Frank C. and Lillian S. Chang  
 William C. and Janice N. Chang  
 William T. Chang  
 Vivian Chang  
 Betty C.W. Chang  
 Henry K. and Gwen T. Chang  
 Patricia Y. K. and Pearl Chang  
 Margaret M. Chang  
 Jean C. Chang  
 Lynette L. Chang  
 Wendy M. Chang  
 Cynthia L. Chang  
 Pauline Chang  
 Francis M. Y. and Jennie L. Chang  
 Lester K. and Sharon Chang  
 Tammy Chang-Motooka  
 John M. Chapman  
 Masayo A. Char  
 Walter F. and Mildred C. Char  
 Robert W. and Myrtle M. Char  
 Evelyn L. Char  
 Janet W. Char  
 Aileen K. Char  
 Kendall Char  
 Grant Chartrand  
 Jaimie Chee  
 William K. and Dorothy K. Chee  
 Glenn T. and Sheila L. Chena  
 Don Cheraimie  
 Mary Cherry  
 James W. and Julia Cherry  
 Jesse Cheung  
 Samuel K. Chillingworth  
 Deane M. Chinen  
 Barry and Bessie Chinen  
 Paul and Yvonne Chinen  
 Robert S. Chinen  
 Reney Ching  
 Donald W. Ching  
 Donald K. and Loretta W. Ching  
 Eric and Adele Ching  
 Sylvia L. H. Ching  
 Celia Ching  
 Percival K. S. and Rose A. M. Ching  
 Pauline Chinn  
 Robert Chinn  
 Helen M. Chisum  
 Audrey L. Chock  
 Edward Y. Chock  
 Gilbert and Doris Choi  
 Howard K. Chong and Janet M. Shimamoto-Chong  
 Bertram T. Chong  
 Sherry Chong  
 Velda Y. Chong  
 Winona T. Chong  
 Irmalee Choo  
 Andrea M. and Steven A. Chow  
 Mary Ann Chow  
 Marian K. and Joe K. Chow  
 Stephen S. Choy, Ph.D  
 Wallace A. and Mabel L. Choy  
 Virginia B. Choy  
 Angela Choy  
 Gary C. P. Choy  
 Christine C. Chrismore  
 Arthur L. Christensen  
 Candice Christiansen  
 Donna Christle  
 Frank and Felicitas W. Chuberko  
 Victor and Sue Ann Chun  
 Carlton and Cynthia Chun  
 Allen D. Chun  
 Katherine W. Chun  
 Thomas B. Chun  
 Eloise B. Chun  
 Linda L. L. Chun  
 Clark KM Chun  
 Mary M. Chun  
 Lawrence and Diane P. Chun  
 Myra W. Chun  
 Irving Chun  
 Marian Chun  
 Yoshie O. Chun  
 Herbert S. and Nora M. Chun  
 William G. Chung and Myrna Zezza  
 Leatrice L. Chung  
 Carol Chung  
 Gary and Mary Chung  
 Thomas and Jane Chung  
 Diane L. Chung  
 Jason and Brenda Clarabal  
 Alfred and Juanita J. Clark  
 Thomas D. and Dawn A. Clark  
 Jessica A. S. Clark  
 Myong S. Clark  
 Lourdes S. and Danny Clark  
 Glenn D. Clark, Jr.  
 John R. and Karla W. Claybaugh  
 Jerry K. and Chan F. Co  
 Ms. Marie E. Cobb and Ms. Whitney A. Cobb  
 Lillian E. Coburn  
 Renee M. Coester  
 Millie Cole  
 Stephen L. Coles  
 Valeria Collins  
 Rosalyn K. Dias  
 Bryan Coloma  
 Consuelo Comiso  
 Linda Conroy  
 Maureen Coogan  
 Gail M. Cook  
 Beverly J. Cook  
 Kenneth W. Cook  
 Jewel H. Cooke  
 Alfred J. Coppola  
 Dominique L. Cordy  
 Leslie H. and Shan Correa  
 Joseph and Rene Correia  
 Cynthia Coskrey  
 Melissa Cox  
 Christopher J. Crandall  
 Leslie G. and Aiko K. Crandall  
 J L. Cronin  
 Peter A. and Martha E. Crosby  
 David H. Crosby  
 Karen L. Cross  
 Denise and David Cuadrado  
 Alfred and Shirley S. Cubio  
 Robert P. Cunningham  
 Lee E. and Daniel S. Curran  
 Pamela S. Dagrossa  
 Rosemarie F. Daguio  
 Gary Dale  
 Patrick and Faye Daly  
 Edgar W. Dangler  
 Faye Daniel  
 Paul A. Dannenberg  
 Doug M. and Cathy S. Davenport  
 Lee and Anne Davis  
 Conrad and Marjorie A. Davis  
 William G. and Caroline Davis  
 Robert L. Davis  
 Lance Davis  
 Margaret A. Davison  
 Carolyn K. Daws  
 Lauren K. Dawson  
 Bonnie De Freitas  
 Keith and Phyllis M. De Peralta  
 Marlow De Rego  
 Barbara DeBaryshe  
 Rita Degnan  
 Robert and Juliette Deibler  
 Lynn C. Del Rosario  
 Remeliza A. Del Rosario  
 Rosemarie Delacruz  
 Michael Delacruz  
 Geraldine Dela Pena  
 Patricia Delong  
 Ronald G. Demyan  
 Marlow A. DeRego  
 Ellen J. Desruisseaux  
 William S. and Donna J. Devick  
 James A. and Fumiyo S. Devoe  
 Barbara Dew  
 Bob Deyoung  
 Chasity and Keith J. Dezzani  
 Herbert M. Dias  
 Rosalyn K. Dias  
 Jack Digmon, Jr and Gerri Digmon  
 Thomas A. Digrazia  
 Brent K. and Maryam R.

## DONOR LIST BY CATEGORY

Dillabaugh  
 Douglas H. and Lei Dilliner  
 Judy A. DiRita  
 Mary T. and Charles T. Dixon  
 Jill M. Doane  
 Bayard K. Doane  
 Mary D. Dohrman  
 Kay and Mamoru Doi  
 Marcelina Domingo  
 Gene W. Doo  
 Mary Ann P. and Jimmie Dorsey  
 James T. and Charlyn Dote  
 Sally H. Drake  
 Julia P. Duarte  
 Marie L. Duby-Sugai  
 Nancy E. and Charlie Dudoit  
 Sally D. Duffield  
 Gordon L. Dugan  
 Arlene K. Duncan  
 Bob and Janet Durrett  
 Carmen Dusza  
 Maile L. Duvauchelle  
 Esther E. Dye  
 Barbara F. Earle  
 Peggy H. Ebata  
 Annette N. Ebinger  
 George E. and Pamela G. Ednie  
 Naomi N. and Harold D. Edwards  
 Charlotte C. Edwards  
 Steven M. Egesdal  
 Rick J. and Susan K. Eichor  
 Marianne Eismen  
 Henry D. and Estelle I. Ellington  
 Laura K. Emanovsky  
 Emerson L. Endo  
 Calvin M. and Kayoko Endo  
 Bill and Alberta Eng  
 Judy A. English  
 Eugene R. and Kathryn J. Epperson  
 Chikako T. and James P. Epure  
 Cosmedine S. and Edwin G. Esmena  
 Michael Estes  
 Peter Estomago  
 Nira Y. and Ernest R. Estrella  
 Kenneth and Shari Evans  
 Uson Y. and Lani L. Ewart  
 Anne Ezer  
 Melvin and Thelma Ezer  
 Stoughton R. Farnham  
 Paula S. Faulkner  
 Beverly J. Fe Benito  
 B.J. Feldman  
 Ritabelle Fernandes  
 Florence M. Fernandez  
 Anita M. Ferreira  
 Karen Ferreira  
 Ursula Fetsko  
 Patricia R. Field  
 Elizabeth U. and Garrett W. Field  
 Pamela K. and Russell Figueiroa  
 Virginia O. Fine  
 F L. Fines  
 Jozef L. and Sonya Finkey  
 Sara L. Finnemore  
 Caroldean N. Fischer  
 Michael Fischer  
 Robert W. and Joyce I. Fiske  
 Rebecca L. Fitzgerald  
 John R. and Francine L. Fiust  
 Robert and Simone Flair  
 Staci A. Follante  
 Annabelle C. Fong  
 Beth Fong  
 Keith S. and Sheri F. Fong  
 Anne S. Fong  
 Robert W. Foote  
 David J. Forsyth  
 James R. and Nathalie E. Fox  
 Steven C. Foytich  
 Dale W. and Karen Francisco  
 Richard N. Freeman  
 Wallace F. Froiseth  
 Margaret D. Froome  
 H. Joe Fuchino  
 Amy T. Fujii  
 Edward and Florence Fujimori  
 Bert K. Fujimori  
 Vivian Fujimoto  
 Gordon M. Fujimoto  
 Barbara Fujimoto  
 Kenneth K. and June K. Fujimoto  
 Agnes H. Fujimoto  
 Florence Fujimoto  
 Taeko J. Fujimura  
 Walter S. and Helen S. U. Fujimura  
 Paul and Toni Fujinaga  
 Nancy Y. Fujinaka  
 Betty Fujinaka  
 Amy H. Fujino  
 Ralph S. Fujioka  
 Carolyn Fujioka  
 Alvin K. Fujioka  
 Ira M. and Catherine M. Fujisaki  
 Harold and Doris Fujita  
 Francis H. and Gracie S. Fujitani  
 Jean Fujitani  
 David K. and Jan K. Fujiwara  
 Anne Ezer  
 Mildred Fujiyama  
 Elaine Y. Fukada  
 Peggy K. Fukai  
 Bruce and Barbara Fukuchi  
 David and Cynthia Fukuda  
 David H. Fukuda  
 Michie and Tetsuji Fukuda  
 Vernetta N. Y. Fukuda  
 Lane Fukuda  
 Marion Fukuhara  
 George A. and Lei L. Fukuhara  
 Edwin M. and Delia S. Fukuji  
 Charlotte Fukumoto  
 Janice Y. Fukumoto  
 Ichiro and Jean T. Fukumoto  
 Loretta T. Fukumoto  
 Francis H. Fukumoto  
 Paul S. and Charlene S. Fukunaga  
 Janice H. and Henry Y. Fukunaga  
 Richard Fukunaga  
 Steven S. Fukunaga  
 Nancy F. Fukushima  
 Doris Fukushima  
 Lee Won Fulbright  
 Gigi Fuller  
 James T. Funaki  
 Rodney Y. Funakoshi  
 Ratsamy Funasaki  
 Arlene Funk  
 Rachel A. Furner  
 Joseph S. and Yuriko K. Furukawa  
 Michael S. and Claire Y. Furukawa  
 Yoko Futa  
 Rosina Galdeira  
 Patricia Galow  
 E. J. Garcia  
 Peter Garcia  
 Patrick Garcia  
 E D. and B W. Garrett  
 Nora W. Garrod  
 Dolores H. Gascon  
 Lisha Gaudiano  
 Carl Gaumont  
 Naomi M. Gauthier  
 Christine Gaylord  
 April D. Gebheim  
 Ronald Gella  
 Gina M. Gentile  
 Michael Georgi  
 Jonathan Hake  
 Josephine B. Gernold  
 Henry Geronimo  
 Kenneth P. and Phyllis A. Gibson  
 Tammy Giebler  
 Frederick J. Gilbert  
 Lois H. Gill  
 Sharon W. U. Gillespie  
 Ray Gillespie  
 Ryan A. Gillia  
 Leroy and Arline Gilliland  
 David H. and Grace T. Gilson  
 Gilbert A. and Edith R. Gima  
 Glenn and Judith Ginoza  
 Helen Y. Ginoza  
 Melodee Giral-di-Akua  
 Rose Gladstein  
 Mary Glover, M.D.  
 Dennis C. and Rose F. Go  
 Jerry and Catherine K. Gold  
 Luzviminda D. Golez  
 Helen S. Gomi  
 Sharon A. Gonzales  
 Julia D. Gonzalez  
 Mathew and Shelby Goo  
 Beatrice Goodenow  
 Marjorie Goodloe  
 Betty J. Goodwin  
 Brian Goodyear  
 Gary A. and Susan K. Goto  
 Eden Goto  
 Steven T. Goto  
 Beatrice Gould  
 Betsy Goya  
 Linell Goya  
 Donna and Dawn Grad  
 Rachel Greer  
 Norma B. Greer  
 Joseph J. and Beverly V. Greges  
 Lawrence Gries  
 Catherine E. Griffin  
 Harold F. and Carolynn Griffith  
 William W. Griffith  
 Emily Grimone  
 James and Betty Grogan  
 Robert M. Grossman  
 Jerome Grossman  
 Robert S. Grossman and Geraldine Marullo  
 Joel E. Grotstein  
 Francis J. and Annie L. Guerrero  
 Angela Guillermo  
 Howard and Ellen Gushiken  
 Martin J. Gustafson  
 Marcela B. Guzman  
 Micki Ha  
 Randall E. and Iris S. Ha  
 Jeff M. and Karen A. Y. Hackler  
 Joyce A. Hada  
 Nicholas and Caroline Haderlie  
 David J. Haena  
 Nancy Hagiwara  
 Francis S. Haines  
 Benjamin Haldeman  
 Keahi Haleamau  
 Gaylien S. Hall  
 Jana Hall  
 Judith A. Hall  
 Glenn and Karen Hamada  
 Margery K. Hamai  
 Sandra K. and Roy N. Hamasaki  
 Richard A. and Carolyn A. Hamilton  
 Viola Hamilton  
 Alice S. Hamnett  
 Ormond Hammond  
 Shirley and Howard Han  
 Andrew and Colleen Hanakawa  
 Lisa K. and G.K. Haneda  
 David L. and Katherine S. Hanlon  
 Danette K. Hanohano  
 Mark and Janet Hanson  
 Sherry K. Hanson-Ching and Ken W. Ching  
 Charles H. Hao  
 Roland and Sylvia Harada  
 George S. Harada  
 Osamu Harada  
 Walter T. Harada

## DONOR LIST BY CATEGORY

Judy M. Harbottle  
 Karen M. Hare  
 Maxine Hargrave  
 Paul D. and Margaret H. Haring  
 Esma R. Harper  
 Sara Harris  
 Colin K. Harris  
 Peter Harris  
 Donna G. Harrison  
 Denise M. Harrison  
 Ruth M. Harry  
 James R. Harstad  
 Renee A. and Dan K. Hartenstein  
 Frances G. Hartmann  
 Linda Harvest  
 James and Patricia Harwood  
 Betty Hasegawa  
 Fumiko Hashimoto  
 Harlan H. Hashimoto  
 Beatrice M. Hashimoto  
 Susan M. Hashimoto  
 Lorraine L. Hashimoto  
 June S. Hashizaki  
 Bryan and Cyndee Hata  
 Elsie S. Hataye  
 Cynthia S. Hayakawa  
 Richard K. and Suzanne A. Hayashida  
 Joan Hayward  
 Deborah J. Hazama and Peter B. T. Lum  
 Charles and Laura Heath  
 John and Frances T. Heatherman  
 Michael G. and Christina M. Hebert  
 Elizabeth F. Heckman  
 George W. Hedricks, Jr.  
 Carolyn S. Hee  
 Sean K. and Suzette M. Heely  
 Marvalyn E. Heery  
 Ronald and S.A. S. Heller  
 Glenn H. and Kathleen S. Helme  
 Cecil L. and Miyo Hendricks  
 Todd E. Hendricks  
 Sumiko Henna  
 Yeichi and Kikuye Henna  
 Billy Henson  
 Jennifer L. Herald  
 Hildre C. Herrera  
 Alice A. Herring  
 Vickie L. Hetue  
 Darryl D. Heu  
 Ann and Randall D. Heu  
 David A. and Robynne Y. Heulitt  
 Robert C. Hicks  
 Ronald and Doris Higa  
 Takashi and Karen K. Higa  
 Charles A. and Helen K. Higa  
 Dorothy Higa  
 Kimiko H. and Harry Y. Higa  
 Howard S. Higa  
 Yoshiaki Higa  
 Satoru and Yoshiko Higa

Ellen Higa  
 Merle N. Higa  
 Sharon P. Higa  
 Tamotsu Higa  
 Gail S. Higaki  
 Ann M. Higashi  
 Kelly Higashi  
 Sylvia K. Higashi  
 Barbara M. Higgins  
 Brian Higuchi  
 Robby Higuchi  
 Mieko H. Higuchi  
 Shingo Higuchi  
 Karen F. Hildebrant  
 Virginia M. Hioki  
 Ruth S. Hirahara  
 Tom Hirai  
 Nobue Hirakawa  
 Tatsuo and Carolyn H. Hiraki  
 Terese C. Hiram  
 Grace Y. Hiramatsu  
 Stephen Hiramoto  
 Mieko Hiramoto  
 Bryan and Cyndee Hata  
 Mildred S. and Kazuo Hiranaka  
 Francis H. and Carol Hirashiki  
 Gloria S. Hirata  
 Evelyn M. Hirata  
 Ronald K. Hirata  
 Jeremiah L. and Dianna Ho  
 Lillian C. Ho  
 Harry Y. Ho  
 Maizie Y. Ho  
 Natsumi Hodson  
 Aimee S. Hokama  
 Susan T. and Wayne T. Hokama  
 Joyce M. Hokama  
 Renee Hokama  
 Rachel L. Hollander  
 Jim Hollyek  
 Michael S. and Mary Y. Honda  
 Wallace S. and Aylene H. Hong  
 Carol H. I. Hong  
 James K. Honke  
 Hatsuo and Yoshino Honma  
 Carole Horiuchi  
 Terry T. Hosaka  
 Bruce F. and Jeannie B. Hosaka  
 William P. and Laura E. Hotchkiss  
 Kasinta S. Houmarek  
 Donald and Lois K. C. House  
 Xiang Lin Hu  
 Edmund Hu  
 Margaret Hua  
 Mimi Huang  
 Jeffrey A. Huff  
 Fred C. and Hwa C. Hung  
 Violet Kam Hung Chong  
 Debra A. Hunt  
 William and Joyce Hunt  
 Dorcas K. Hussey  
 Vreni U. Hutcherson

Dorothy L. Hutchins  
 Sharon Huynh  
 Henry and Helena Hwang  
 Patrick and Barbara D. Hyland  
 Kenneth F. and Jane Y. Ibara  
 Nerissa K. Ichinose  
 Jean U. Ichinotsubo  
 Dorothy S. Igawa  
 Jean S. Ige  
 Edward S. and Darlene Y. Ige  
 Shirley F. Iha  
 Nathan A. Iha  
 Sadako K. Ikeda  
 Aiko M. Ikeda  
 Victoria L. Ikeda  
 Randal Y. and Pamela N. Ikeda  
 Shizuye Ikehara  
 Andrew A. Ikehara  
 Roseline T. Ikeno  
 Toshiharu Ikezaki  
 Edmond K. Ikuma  
 Maria Ilderton  
 Walter K. Imai  
 Harry M. and Viola S. Imai  
 Jane S. and Edward K. Imamura  
 Russell K. and J.T. Inaba  
 Caron M. Inagaki  
 Donald and Arlene Inamine  
 Tracy S. P. Ing  
 Henry F. Ing  
 Eleanor S. Ing  
 Noble K. and Loretta W. Ing  
 Louise K. Ing and Michael Stch  
 Brian Ingkom  
 Kyle and Gladys Ino  
 Ralph S. Inouye  
 Kenneth H. and Janet E. Inouye  
 Misuko and Richard Inouye  
 Herbert S. and Judith S. Inouye  
 Shera K. Inouye  
 Hilda Inouye  
 Michele Inovejas  
 Charity Irons  
 Michelle Irorita  
 Ted Isaac  
 Anton Iseke  
 Gerald T. and Sheila Iseri  
 Lincoln J. Ishida  
 Howard H. Ishihara  
 David H. and Kuei H. Ishii  
 Miye L. Ishii  
 Richard S. Ishikawa  
 Dennis T. Ishikawa  
 Karen Ishikawa  
 Sue Ishikawa  
 Lenore K. and Warren T. Ishimi  
 Kenneth S. and Nancy Y. Ishimoto  
 Michael and Julie M. Ishioka  
 Hachiro and Lei Ishizu  
 Philip I. Itoh  
 Holbin P. and Barbara Iuli  
 Sara S. Iwai

Lance T. Iwami  
 Iris Iwami  
 Ernest and Grace Iwane  
 Ethel C. Iwasaki  
 George H. Iwasaki  
 Crystal Q. Iwasaki  
 Helen N. Iwatani  
 Melagrosa C. H. Izon  
 Nguyen and Leslie Izuwa  
 Donna T. Jackson  
 Dwight N. Jackson  
 Barbara N. and Wilson N. Jacobson  
 Christopher Jacoby  
 Jacquelyn P. and J. Peter Jaeger  
 Florence Jakahi  
 Juliet Y. Jakahi  
 Douglas Y. Jakahi  
 Lucille S. James  
 Leon James  
 Cora Jay  
 James E. and Carolyn H. Jech  
 Adrienne M. Jefferson  
 Susan B. Jennings  
 Katherine K. Jerviss  
 Samai Jessop  
 Ann E. Jex  
 Robert and Annette Jim  
 Dora Jinnohara  
 Ipolani Johnson  
 Gary L. and Evangeline M. Johnson  
 Michelle L. Johnson  
 Maryanne Johnson  
 Patricia G. Johnson  
 Richard F. Johnson  
 Michelle L. Johnson  
 Amanda Johnson  
 Chad Johnston  
 Terry Joiner  
 Marsha Jokura  
 Andrew A. Jones  
 Anne V. Jordan  
 Peter F. Junker  
 Anne Jurczynski  
 Merna R. Justic  
 Florence Kaai  
 Eleanor H. Kaaina  
 Vickie P. Kaauwai-Kauhane  
 Phyllis Kadota  
 Dean Kaeo  
 Peter K. and Marietta K. Kaeo  
 Keith K. Kagamida  
 Thomas Kagawa  
 Ronald K. and Barbara J. Kahapea  
 Marian and Alexander Kahapea  
 Paul M. and Arnolette K. Kahele  
 Mary N. Kahler  
 Rodney Y. and Marion W. Kaichi  
 Yasuto Kaihara  
 E Kaiponohea Hale  
 George K. and Elsie K. Kaisan  
 Vernon M. and Lorrian S.

## DONOR LIST BY CATEGORY

Kajikawa  
 Allen Y. Kajioka  
 Leslie M. Kajiwarra  
 Jess Kajiwarra  
 Judith T. Kakazu  
 Winifred Kakazu  
 Haruo H. Kakiuchi  
 Susan T. Kakuda  
 Leialoha G. Kaleikini  
 David K. Kaloi, Jr.  
 Mildred S. Kam  
 Wendell W. Kam  
 Edward Kam  
 Peter Kama  
 Rae L. and William K. Kamaka  
 Kenneth S. and Loretta S. Kamei  
 Sheena T. Kamihara  
 Irene A. Kamikawa  
 Robert M. and Shirley R. Kamins  
 Donald Y. Kanagawa  
 Lawrence B. and Mildred C. Kane  
 Nancy Kane  
 William T. and Dorothy Kaneda  
 Renee R. and Kikuye S. Kaneda  
 Amy S. Kaneshiro  
 Betsy A. Kaneshiro  
 Karen Kaneshiro  
 Kelvin H. and Jacqueline L. Zane  
 Kaneshiro  
 Kenneth M. and Amy T. Kaneshiro  
 Lynne Kaneshiro  
 Owen D. Kaneshiro  
 Ronald I. and Lillian M. Kaneshiro  
 Seiyu Kaneshiro  
 Thomas M. and Sachie Kaneshiro  
 Patsy Y. Kanzaki  
 Marjorie M. Kariya  
 Lori F. Kashimoto  
 Russell Kashiwa  
 Jeffrey L. Katahara  
 Lynn N. Kataoka  
 Patrick and Suzette Kataoka  
 Diane T. Kato  
 Bernice Y. Kau  
 Sharon Y. and John Kauinana  
 Suzanne R. Kaulukukui  
 May M. and John D. Kaupiko  
 Margaret K. Kawale  
 A.T. Kawaguchi  
 Masayuki and Lorna K. Kawahara  
 Edna Y. Kawai  
 Jonathan K. and Anne M. Kawai  
 Nathalie B. Kawai  
 Edward N. Kawakami  
 Eugene H. Kawamata  
 Mike T. Kawamoto  
 Catherine Kawamura  
 Sheri N. Kawano  
 Jill M. Kawano  
 Mildred A. Kawano

Shane R. and Susan Y. Kawasaki  
 Janet H. Kawata  
 Virginia M. Kawachi  
 Janet E. Kawelo  
 Lena G. Kawelo  
 Gordon and Frances Kawelo  
 Lorraine J. Kay  
 Allen T. Kaya  
 Ramona Kazma  
 Sharon F. Keahi  
 Sarah P. I. Keahi  
 Joanne M. Kealoha  
 Wendy N. Kealoha  
 Bruce F. and Patricia M. Keane  
 Mary Keefe  
 Colleen Keirn  
 Kristin Ali Keith  
 Doreen S. and Daniel F. Kelii  
 Bernadette Keliiaa  
 Geraldine F. Kelley  
 Sandra K. Kelley  
 Florence M. Kelley  
 Karen Kelly  
 David B. Kemble  
 John V. Kendrick  
 Terry Kennedy  
 M. E. Kepoo  
 E. Robert Kern  
 Richard I. Kersten  
 Phokam and Souksada  
 Khamvongsod  
 M. Asad and Tahera Khan  
 Gerald H. Kibe  
 Kanae Kidaka  
 Robert S. and Linda R. Kidani  
 Seth Kiefer  
 Gregory J. Kikukawa  
 Karen Kikukawa  
 Jerry M. and Dorothy K. Kikuta  
 Melanie E. Killam  
 Greta C. Kilpinen  
 Myrtle O. Kim  
 Ji-Yeon Kim  
 Jerilynn Kim  
 Tina M. Kim  
 Clara Kim  
 Stephanie Kim  
 Moses and Jean Kim  
 Janice P. Kim  
 Sung K. and Duk Hee Kim  
 John R. and Beverly H. Kim  
 Gary and Ginny Kimata  
 Martin H. Kimoto  
 Rob M. and Hazel S. Kimoto  
 Karen T. Kimura  
 M.M. and C.J. Kimura  
 Amy F. and Roy K. Kimura  
 Eunice A. Kimura  
 Colleen Kimura  
 Gloria Z. King  
 Alma J. King  
 Joan C. King

Loreen E. King  
 Erma M. Kinilau  
 Marilyn F. and Alberto Kinoshita  
 Amy Y. and James H. Kishaba  
 Joyce and Troy Kishaba  
 Theodore M. and Alice N. Kishimori  
 Henry M. Kishinami  
 Akiyo Kitagawa  
 Cheryl K. Kitahara  
 Tadashi D. and Martha A. Kiyabu  
 Nobu R. and Janet A. Kiyan  
 Harlan P. and Julie S. N. Klein  
 Loretta M. Klemm  
 Hilda M. Klenske  
 Shirley Klippert  
 David Kluempers  
 David Ko  
 Mr. and Mrs. David Koani  
 Elaine Kobayashi  
 Bert C. and H. Kochi  
 Arlene Koegler  
 Valerie S. Koenig  
 Tina Koga  
 Shigeji Kogachi  
 Arleen H. Kohnke  
 Kimberly J. Koide  
 Wayne H. Koide  
 Tina Koike  
 Francis Kojima  
 Frances S. and Yoshiharu Kokubun  
 Doris A. Kollars  
 Byron A. and Lorrie A. Kolt  
 David M. and Harriet H. Komo  
 Frances I. Komoda  
 David M. Komori  
 Karen C. K. Komori  
 Alton Komori  
 Masahiro and Nancy L. Kono  
 Ellen Koppenheffer  
 Ernest and Norma Koroki  
 Minnie Kosasa  
 Desmond M. Kotake  
 Gladys M. Kotaki  
 Robert J. and Christine E. Kowal  
 Richard J. and Susan Kowen  
 Nancy Koyama  
 Terrie Lynn S. Koyamatsu  
 Jill E. Kozuki  
 Stanley and Barbara Krasniewski  
 Donald G. Kroessig  
 Marcus P. and Lauren G. Kropf  
 Keith Krueger  
 Bill Kruge  
 Aileen J. Kuba  
 Harold I. Kudo  
 Larry Kuhns  
 Gail Kumakura  
 Jane Y. Kumamoto  
 Robert N. Kumasaka  
 Lisa D. B. Kumbroch

Hideko Kunichika  
 George K. and Maria S. Kunihiro  
 Valri L. Kunimoto  
 Kenneth K. Kunisaki  
 Shinkiyoi and Fumiko Kuniyoshi  
 Samuel Kuo  
 Andrew K. Kurata  
 Michael Kurch  
 Diane L. Kurihara  
 Kent and Susan Kurihara  
 Gerrit N. and Jodi Ann K. Kurihara  
 Melvin S. and Ann S. Kuroiwa  
 Wilfred and Caren Kusaka  
 Fukuichi and Eleanor Kusakabe  
 Harriet Y. Kusunoki  
 Janet E. Kuwahara  
 Jean M. Kuwahara  
 Walter Kuwasaki  
 Lyn Kux  
 Adrian P. Kwock  
 Sandra Kwock-Silve  
 Betty La Count  
 Harold J. La Pierre  
 Brandon Laan  
 Minnie Lacking  
 Megan Lafaso  
 Pat Lafleur  
 Annette C. Lam  
 John V. Lamantia  
 Lai Lamb  
 Thomas and Ludivina A. Landeza  
 Valorie and Richard Langit  
 Dennis L. and Kathy S. Laoron  
 David Larson and Janis Turner  
 Bernard and Christine Lasconia  
 Stephen and Renee Latimer  
 Joseph P. Laturneau  
 Michael H. and Carol J. Lau  
 Kori K. Y. and Vernon S. Lau  
 Linda Lau  
 Sallie M. L. and Mark T. Lau  
 Luane S. M. Lau  
 Steven Lau  
 Teresa K. Lau  
 Velma Y. Lau  
 Wilfred H. and May C. Lau  
 Mildred C. Lau  
 Lawrence H. Lau  
 Chew P. Lau  
 Sharon S. Lau  
 Elizabeth Lau  
 Carol Lau  
 Lau  
 Chew L. and Gertraud H. Lau  
 Sylvia L. M. Lau  
 Violet Lau Lai  
 Robert M. Laube  
 Mila Lavarro  
 Bonifacia and Trisha A. Leasure  
 Doris G. Lee  
 Gregory Y. and April C. Lee

## DONOR LIST BY CATEGORY

Edmund K. and Natalie P. Lee  
 Karen V. Lee  
 Edgar Lee  
 John V. Lee  
 Carol A. and Steven Lee  
 William W. and Mei-Ching C. Lee  
 John F. Lee  
 Patricia D. and Daniel F. Lee  
 Stanley H. Lee  
 Karen N. Lee  
 Edward E. and Joelle L. Lee  
 Robert C. Lee  
 Dickson and Marilyn Lee  
 Donald and Gwendolyn C. Lee  
 Robert and Doris Lee  
 Clifford A. and Beverly M. Lee  
 Brian F. Lee  
 Clarice H. and Tsin Hoy Lee  
 Brenda C. Lee  
 Kenneth Lee and Kathryn Koos-  
 Lee  
 Janet E. Lee  
 George K. and Phyllis H. Lee  
 Soon S. and Evangeline Lee  
 Brenda Y. Lee-Parker  
 Linda Legrande  
 Kiele Heather Lehel  
 Kenneth and Georgia M. Len  
 Chieko Lendio  
 John and Sharon Lennon  
 Richard M. J. Leon  
 Peter and Sunshine Leon-  
 Guerrero  
 Craig Leong  
 George W. Y. and Helen C. Leong  
 Kathleen R. N. Leong  
 Laura and Stephen Leong  
 Moana G. Leong  
 Raymond K. and Etta N. Leong  
 Sterling Y. and Faith Y. Leong  
 Vivian K. Leong  
 Joanne Lesh  
 Mona C. Leu  
 Suyeko N. Leu  
 Hermance M. Levesque  
 Annette M. Lew  
 Michelle Lewis  
 Sarah Li  
 Jane B. Libby  
 Alex I. Lichton  
 Erin and Chad Liftee  
 Bedora Lim  
 Thomas L. Limm  
 Priscilla W. Lindsay  
 Elna and Charles Lindsey  
 J. Ling  
 Heidi M. and Christopher D. Ling  
 Amy E. Littlejohn  
 Gordon J. Liu  
 Shirley M. and David Y. Liu  
 Gerald M. and Rose Y. Liu  
 Michael K. and A.J. H. Livingston  
 Lawrence C. and Jane S. Lo  
 Marilyn K. Lo  
 Elaine Lo  
 David H. Lomas  
 Bernard S. Loo  
 Calvin K. H. and Mee Quai P. Loo  
 Helen Y. Loo  
 Stanley Y. Loo  
 Lois C. Loomis  
 Karen L. Loomis  
 Lynn M. and Robert A.  
 Loopeskoo  
 Florence C. Loui  
 Leland H. Y. Louie  
 Harold Louis  
 Heith Allen K. and Sue Lynn K.  
 Louis Soares  
 Nicole Love  
 Dennis E. and Dawn K. Low  
 Ellen D. Lowe  
 John and Catherine Lowrey  
 Fredrick Lowrey  
 Marylyn A. L. Loy  
 Frances B. Lucier  
 Lindsey D. Lufkin  
 Lorna L. Luis  
 Annie Lo Ling P. Luk  
 Carolyn C. Luke  
 Dorman P. and Evelyn C. Lum  
 Alvin Y. and Judy Y. Lum  
 Bertha Y. Lum  
 Jennie K. Lum  
 Madeline C. Lum  
 Robert C. and Elizabeth K. L.  
 Lum  
 Thomas W. O. and Shirley M.  
 Lum  
 Nelson H. Lum  
 Clarence C. Lum  
 Gordon M. and Stella M. Lum  
 Kee  
 Aileen S. Lum-Akana  
 Jeanne M. Lung  
 Nellie W. Lutz  
 Karen M. Lynch  
 Shirley S. Lystad  
 Gail Y. F. Ma  
 Kelvin and Elaine Ma  
 Richard and Norma Y. Ma  
 Susan H. Mabe  
 Frank A. and Rochell H. Machado  
 Sandra N. Mactagone  
 Lynn Madanay  
 Kaori J. Maeda  
 Ronald H. Maeda  
 Thomas K. and Jean M. Maekawa  
 Frances N. Maekawa  
 Mildred K. Maemori  
 Yoshiko and Tatsuyuki Maeshiro  
 Helen S. Maeshiro  
 Stephanie M. Magloire  
 Rosario V. Magsino  
 Ilima Maiava  
 Dudley K. Makahanaloa  
 J. Makishima  
 Craig M. Makiya  
 Eugene C. Malalis, Jr.  
 Debra Malia  
 Fay S. N. Malinoski  
 Lucille C. Malouche  
 Ted W. Maly  
 Michael R. Manning  
 Mitsuo and Shizuko Mansho  
 Teresa Mansson  
 Glory R. P. Manzano  
 Eileen B. Marchan  
 John L. and Alice N. Mariani  
 Sotera Mariano  
 Merita N. Marquez  
 Linda M. and Stephen J. Martel  
 Alice E. Martensen  
 Mary Martin  
 Anthony L. and Gloria J. Martin  
 Suzanne Martin  
 Dakota Martin  
 Eileen M. Martmann  
 Arthur H. Marutani  
 Helen S. and Wilfred Maruyama  
 Deborak A. Martyniuk  
 Franklin and Ernesta Masagatani  
 Claire M. Masaki  
 Pauline Y. Masaki  
 Ruby Masciangelo  
 Michael Mastronardi  
 Kevin M. Masuda  
 Ethel S. and Glenn Y. Masui  
 Lynn Masumoto  
 Scot Matayoshi  
 Harold M. Mateja  
 Austen T. Matro  
 Leslie Matsubara  
 Alan T. Matsuda  
 Betty Matsuda  
 Florence M. Matsuda  
 Janet H. Matsuda  
 Charlene M. and W. K.  
 Matsumoto  
 Iris Matsumoto  
 Laura Matsumoto  
 Paul K. and Genevieve Matsumoto  
 Takeo and Winifred M.  
 Matsumoto  
 Florence S. Matsumura  
 Calvin T. and Florence M.  
 Matsumura  
 Carol Matsunaga  
 Lillian O. Matsunami  
 Alan Matsunami  
 Roy T. and Joyce K. Matsuo  
 Herbert T. Matsuo  
 Lana S. Matsuoka  
 Colleen S. Matsuura  
 Reed H. Matsuura  
 Robert Matsuwaka  
 Kurt T. and Luanne K. Matsuzaki  
 Kayla A. Matthews  
 Collette J. Mattos  
 David D. Mau  
 Kathryn L. Mau  
 Kellie Maunakea  
 Nina W. Maxwell  
 Patricia B. and Terry L. May  
 Thomas and Betsy Mayeda  
 Sherwood D. and Elizabeth K.  
 Maynard  
 Tom Mcandrews  
 Alexander M. McAngus , III  
 Helen and H. Roy McArdle  
 Marie McCabe  
 Michael and Audrey McCarthy  
 John J. McCarthy  
 Gregory M. McCaul  
 John H. McClellan  
 Claudia W. McCloskey  
 Javier M. McColgan  
 Bruce E. McEwan  
 Alan and Ethel McKillop  
 Robyn K. McKnight  
 Beth McLachlin  
 Kelly L. McMahan  
 Sharron McMorrow  
 Rene McWade  
 Beverly U. Medeiros  
 Lionel and Cecile Medeiros  
 Ernest and Elizabeth Medeiros  
 Bobbie J. Medeiros  
 June Medeiros  
 Dennis A. and Grace E. Medeiros  
 Gloria T. Medeiros  
 Caroline M. Mee  
 Greg M. and Julie A. Meier  
 Anna K. and Carl H. Meierdiercks  
 Eufemia C. and Dionisio M.  
 Melendez  
 Terza and Douglas Meller  
 Bruce A. and V. Gladys Mello  
 Joan Mencher  
 Hannah M. Mendes  
 James Meriwether  
 Theodore E. Merrill  
 Claire J. Merry  
 Sheryle J. Mesamer  
 Christine and James K. Messa-Oh  
 Fred B. Metcalf  
 Norman J. and Marilynn C. Metz  
 William J. Metzger  
 Clyde G. Mew  
 Geraldine K. Meyer  
 Frederick T. A. and Alice T.  
 Miggins  
 Frances R. Miike  
 Kenneth M. Mijo  
 Jacqueline A. Mild Lau  
 Isabelle M. Miller  
 Barbara C. Miller  
 Donald K. and Mary V. Miller  
 Lee A. Miller  
 Bernadine Miller  
 Richard S. and Doris Miller  
 Kenneth Y. Minami

## DONOR LIST BY CATEGORY

Shirley A. and Albert Minn  
 Barbara M. Minton  
 Barbara Y. Mishima  
 Lori Mishima-Young  
 Lucile Smith Mistysyn  
 Randal M. and Iris M. Mita  
 Richard Mitchell  
 Daniel and Lana Mito  
 Stacie Mito  
 Charles Mitsuyama  
 Galen M. Miura  
 Spencer D. Miura  
 Wallace M. Miura  
 Nancy M. Miura  
 Hilda O. Miwa  
 Aileen Miyahara  
 Roy J. and Catherine Y. Miyahira  
 Donald M. and Jean S. Miyaji  
 Allen H. Miyakado  
 Brian Miyake  
 Pamela C. Miyamasu  
 Amanda C. Miyamoto  
 Richard Y. Miyamoto  
 Georgeanne K. Miyamoto  
 Shirley Miyamoto  
 Judith and Bert Miyamoto  
 Esther A. Miyamoto  
 Earl and Sandra Miyamoto  
 George and Hilda Miyasaka  
 Rose S. and Derrick G. Miyasaki  
 Samuel S. and Peggy A. Miyasato  
 Glen K. Miyasato  
 Robert Miyasato  
 James I. Miyasato  
 E. A. Miyashiro  
 Florence K. Miyashiro  
 Carl M. Miyashiro  
 Janyce J. and S.J. Miyashiro  
 James S. and Evelyn H. Miyashiro  
 Lee Miyashiro  
 Lois Miyashiro Tong  
 Isamu and Harriet Y. Miyata  
 Yoshimitsu and Ruth T. Mizuno  
 Kay M. Mochizuki  
 Rosemary J. Mohika  
 David K. Moku  
 Clarence D. Moniz  
 Amy Y. Monk  
 Mariese Montano-Smith  
 Phyllis W. Moore  
 Philip H. and Elizabeth N. Moore  
 Linda Moran  
 Neil and Laurie Morgan  
 Kevin T. and Jan A. Mori  
 Lillian and Morio Morihara  
 James H. and Nora J. Morihara  
 Dorothy J. Morinaga  
 Wayne S. Morinaga  
 Brian Morioka  
 Doris A. and Mark A. Morisaki  
 Wayne Morita  
 Allison Morse  
 Ilse Mortensen  
 Monica M. Mosher-Cates  
 Allan J. and Sharon Y. Mousing  
 William and Marilyn Mossman  
 Mercy Mott, R.N.  
 Mildred S. Mow  
 Russell Moy  
 Godfrieda K. and Lionel L. Muller  
 Yoshiko Mullins  
 Karen O. L. Mun  
 Kenneth K. Mun  
 Marc A. Munden  
 Candice S. Muneoka  
 Gary Muniz  
 Grace K. Murakami  
 Harry H. Murakami  
 Shirley H. Murakami  
 Leslie S. and Dorothy A.  
 Murakami  
 Stanley S. and Ethel S. Murakami  
 Mildred E. Murakami  
 Lynda Murakami  
 Joycelyn Murakami  
 G.Y. and S.K.K. Murakami  
 Kay Muranaka  
 Kenneth and Charlotte Muraoka  
 Carole V. and Marvin R. Muraoka  
 Scot K. and Michelle Muraoka  
 Sanford and Frances Murata  
 Martha H. and Richard T. Murata  
 Kevin S. and Judy S. Murata  
 Ernest T. and Phyllis N. Murata  
 Margaret B. Murchison  
 James E. Murray  
 Robert Murray  
 Marla M. Musick  
 Matthew Mustafaga  
 Dennis and Hedy I. Muth  
 June Myers  
 Claudette P. Naauao  
 Suyeno Nada  
 Natsue Nagai  
 Helen S. Nagamine  
 Richard S. and Florence S.  
 Nagamine  
 Marcia M. Nagao  
 Robert H. Nagao  
 Roy T. Nagasako  
 Yae Nagase  
 James T. Nagata  
 Eleanor T. Nagata  
 Tomoko Nagatsuka  
 Patrice M. Nagley  
 W. M. and C. H. Nakagawa  
 Noboru Nakagawa  
 Wayne and Anne Nakai  
 Wilfred and May Nakakura  
 Yoshitaka and Yukiko Nakama  
 Grace K. Nakama  
 Lisa Nakama  
 J. C. Nakamoto  
 Dean and Gracine Y. Nakamoto  
 Craig Nakamura  
 Cynthia C. Nakamura  
 Evelyn H. Nakamura  
 Gertrude H. Nakamura  
 Hideki Nakamura  
 Kate S. Nakamura  
 Kiyoko Nakamura  
 Kyle S. Nakamura  
 Lana Nakamura  
 Natalie Nakamura  
 Nobuye T. Nakamura  
 Otis S. and Judith J. Nakamura  
 Richard K. and Margaret D.  
 Nakamura  
 Sadamu Nakamura  
 Saku Nakamura  
 Winifred T. Nakamura  
 Ronald S. and Laura L. Nakanishi  
 Katherine Nakano  
 Sumie Nakano  
 Col. George M. Nakano, USAF  
 (RET)  
 James K. and Helen T. Nakano  
 Mark K. and Luana S. Nakano  
 Roy M. and Carolyn J. Nakasato  
 Albert N. Nakasato  
 Calvin T. and Susan Nakashima  
 Richard Y. and Gladys Y.  
 Nakashima  
 Shigemitsu and Janet Nakashima  
 Mabel Y. Nakashima  
 Gilbert H. and Thelma T.  
 Nakashima  
 Brian T. Nakashima  
 Harry M. Nakasone  
 Nolan and Tevie L. Nakasone  
 Raymond and Ione C. Nakasone  
 Jim T. and Lisa Nakata  
 Betty K. Nakata  
 Arthur H. Nakayama  
 Jocelyn K. Naki  
 Norman B. and Bonnie B. Nam  
 Isaac K. Namuo  
 Kamla P. Nand  
 Wendy Naone  
 Owen T. and Jan M. Narikawa  
 Dorothea Narvaez  
 Ross Nashiro  
 Roy T. Nagasako  
 Yae Nagase  
 James T. Nagata  
 Eleanor T. Nagata  
 Tomoko Nagatsuka  
 Patrice M. Nagley  
 W. M. and C. H. Nakagawa  
 Noboru Nakagawa  
 Wayne and Anne Nakai  
 Wilfred and May Nakakura  
 Yoshitaka and Yukiko Nakama  
 Grace K. Nakama  
 Lisa Nakama  
 J. C. Nakamoto  
 Dean and Gracine Y. Nakamoto  
 John T. Ngo  
 Sabrina Nguyen - Schermer  
 Endoso Nicholas  
 Robert N. and Sharon Nichols  
 Barbara M. Nickerson  
 Kate S. Nakamura  
 Nicole Niederdeppe  
 Nami Nielipinski  
 Evelyn M. Nihei  
 Michele Nihipali  
 Amy A. Niitani  
 Shellie Ann N. Niles  
 Kathleen W. and Miles T. Nirei  
 Harriet Nishigaya  
 Kenneth Y. and Myrna K.  
 Nishihara  
 Lillian H. Nishikawa  
 Egan K. Nishimoto  
 Mike Nishimoto  
 Casey Nishimura  
 Arminta R. Nishimura  
 Clifford K. Nishimura  
 Leslie K. Nishimura  
 Lynn Nishimura  
 Roland J. Nishimura  
 Sandra F. Nishimura  
 Tadao Nishinaga  
 Tisha and Randall J. Nitta  
 Anna C. Noborikawa  
 Paul S. and Debra Noborikawa  
 Chiko Noda  
 Irene Noda  
 Clifford Y. Nohara  
 Masayuki and Jean M. Nohara  
 William K. Nohoanu  
 Stanley H. Nojima  
 John Norris  
 Richard T. and Barbara A. Nosaka  
 Dana R. Nottage  
 Lillian S. Numa  
 Suzan S. Nunes  
 Virginia O. Nuneza  
 Joyce Nunokawa  
 Patricia A. O'Connell  
 Catherine and Paul T. O'Neal-  
 Morris  
 Winona Z. Oato  
 Joseph I. and Linda G. Oba  
 Harry H. and Grace O. Obata  
 Lurline A. Obrey  
 Florence L. Oclaray  
 Judy A. Odachi  
 Eugene A. Ogan  
 Ted and Diana S. Ogata  
 Terry Y. Ogawa  
 Russell T. Ogawa  
 Quin and Gail Ogawa  
 Andrew J. Oishi and Laurie M.  
 Tam  
 Kazumae Oishi  
 Yoshinori and Doris Ojiri  
 Roy J. Okada  
 Sandi K. Okada

## DONOR LIST BY CATEGORY

Marlene F. and Eddie A. Okahara  
 Fay S. Okamoto  
 Helene E. Okamoto  
 Lauren M. Okamoto  
 Viola K. Okamura  
 Gerilynn M. Okano  
 Toshie Okazaki  
 Melissa Oketani  
 Richard and Pauline Oki  
 James Y. and Laverne H. Okimoto  
 Harold and Betty Louise Y. Okimura  
 Joyce E. Okino  
 Collette R. Okubo  
 Wynn H. Okuda, DMD  
 Nancy C. and Bob Okuda  
 Arlene Okumoto  
 Richard M. and Lauren A. Okumura  
 Moana Olaso  
 Leonard and Marlene Olayan  
 Haunani I. C. Olds  
 Douglas Olson  
 Leonora S. Olson  
 Mary J. Olson  
 Michiko Olson  
 William E. Olson  
 Tatsuo and Muriel Omiya  
 Stanley S. and Naomi Y. Omizo  
 Donald T. and Doris T. Onaga  
 Roberta A. Oneha  
 Harold M. Onishi  
 Arlene S. Ono  
 Clinton A. Ono  
 Craig Y. Ono  
 Mary Ono  
 Corazon H. Orbito  
 Douglas I. and Alice Y. Orimoto  
 Donald C. and Patricia A. Ornellas  
 Joseph J. Ornellas  
 Mardonio B. and Felicidad G. Orsino  
 Stanley H. Osada  
 George J. and Gail L. Osakoda  
 Que Sun Oshiba  
 Chieko Oshiba  
 Nellie T. Oshige  
 Chester Oshiro  
 Harold S. and Frances S. Oshiro  
 Randall O. and Rosanne F. Oshiro  
 Roy M. and Elizabeth T. J. Oshiro  
 Brian M. and Carol S. Oshiro  
 Seizen Oshiro  
 Sandra M. Oshiro  
 Cynthia A. Oshiro  
 Sally S. and Tom K. Oshiro  
 Ken T. Oshiro  
 Marcus R. Oshiro  
 Yukisada Oshiro  
 Mervin K. and Pauline T. Oshiro  
 Bernice N. Oshita  
 Paul S. and Kimiko Y. Oshita

Albert T. and Betty K. Ota  
 Gary S. and Susie Ota  
 Janice H. Oto  
 Grace M. Otsuka  
 Lawrence Otto  
 Delbert W. Ouye  
 Dorothea Ovio  
 Debra Y. Oxley  
 George K. and Susan Oya  
 Yoon Oya  
 Glenn H. Oyama  
 Grace E. Oyama  
 Elviradale Pacarro  
 Valerie B. Pacheco  
 Rudolph and Irene Pacol  
 Robin F. Pacolba  
 Beny Pacubas  
 Jessica S. Padoemthontaweekij  
 Shari Padua  
 Orlando R. and Carol A. Pagaduan  
 Karie A. Paguio  
 Kathleen M. Pahinui  
 Gail Painter-Cunningham  
 Gerald O. and Toni L. Palermo  
 James Palmer and Maria Romero  
 Jeffrey A. Pang  
 Dora F. Pang  
 Vernon T. and Cynthia Pang  
 Sung H. and Lorraine K. Pang  
 James Pang  
 Michael Pang  
 Adrienne Pantastico  
 Richard K. and Carol L. Papa  
 Janet L. Pappas  
 Robert A. and Kristen M. Pardini  
 James and Wanda Paresa  
 Carol M. Paris  
 Luana K. Park  
 Stanley and Jane Pascua  
 Debra L. Pascual  
 Kelsie Pascual  
 Gina M. Pasion  
 Shoko Paul  
 Susan F. Pauley  
 Erlinita M. Pauole  
 Linda Payanal  
 Nancy E. Pearl  
 Feliciano Pecpec, Sr.  
 Yunus C. Peer  
 Mike and Lita Peeters  
 Jacinta Perera  
 Thomas and Gordynne M. Perkins  
 Barbara B. Perry  
 Eugene E. Perry  
 Iris and R.N. Pestonjee  
 Peter  
 Elizabeth J. Peters  
 Patsy Y. and Jerry Petersen  
 Debra A. Peterson  
 Vera M. Pettit  
 Willis C. and Anna M. Pflugh

Alan R. Picard  
 Judith H. Pieklo  
 Charles J. Pignataro  
 Sandra R. Pimentel  
 Angelito K. Pineda  
 Wendy W. Pires  
 Jai L. and Sandra H. Pleskacz  
 Marjorie Pless  
 Michael R. and Phyllis J. Podolske  
 Pedro M. and Jane T. Poentis  
 Aaron and Kris T. Poentis  
 Andrew A. Pohl  
 Zbigniew and Molly M. G. Polanski  
 Ada-Marie P. Pollard  
 Ellen Polokoff  
 Don Pomes  
 Julia Pons  
 Florence Poon  
 Helen F. Popovich  
 John G. and Lori H. Popovich  
 Aaron C. Potts  
 Jennifer Powell  
 Janet E. Powell  
 Dorothy D. Powell  
 David A. and Donna G. Powell  
 Elizabeth Powers  
 John B. and Jane F. Powers  
 Dorothy M. Prideaux  
 Coral A. Prince-Wilson  
 Irene H. Pritchard  
 Myrna L. Pung  
 Winston Purdy  
 Margaret S. and Ikua K. Purdy  
 Jennifer K. Putman and Bruce Komadina  
 Jumal Qazi  
 Geraldine Quinn  
 Barbara F. Quitan  
 Verna M. Rabacal  
 John J. Radovich  
 Corazon C. Ramos  
 Florencia A. Ranchez  
 Eleanor S. Raneses  
 Judy A. Rantala  
 Roland W. and Ritsuko D. Rasmussen  
 Janet Y. Rawlerson  
 Annajeane Ray  
 Tia H. Reber  
 Arsenio R. Reconoce  
 Tyler Record  
 Josephine Recta-Dela Cruz  
 Jane M. Redmond  
 Mary T. and Stephen H. Reelitz  
 Caroline W. Reeuwijk  
 Derek C. and Priscilla A. Reeves  
 David E. and Kelly G. Reiber  
 Barry Reid  
 Denise P. Reid  
 Carleton B. Reid  
 Iris K. and Thomas W. Rementer

Christy C. Remular  
 Ursula Retherford  
 Roy and Chere Rexroat  
 Wendi Reyes  
 Hewitt Reynolds  
 Estelle Reynolds  
 Richard C. Rezendes  
 Heidi Ribeiro  
 Ted Richardson  
 Wesley H. and Arlene J. Richardson  
 Eleanor S. Richardson  
 George Rio, Jr.  
 Sandra E. Ritz  
 Guy T. and Rowena W. H. Rivera  
 Simone D. Rivera  
 Marcellina Rivera  
 Jan Ro  
 Robert  
 John C. and Kate C. Roberts  
 John A. Robinette  
 Cheryl R. Robinson  
 Roy M. and Margaret E. Robinson  
 David L. Robinson  
 Sergio G. Robles  
 Delfin O. Rodillas, Jr.  
 Robert C. and Evelyn K. Rodrigues  
 Marylouise Rodrigues  
 Clarence Rodrigues  
 Gloria J. Rodrigues  
 Megan Rodriguez  
 Rafael L. and Ashleigh M. Rodriguez  
 Michael T. and Alissa B. B. Rogers  
 A.J. Rogers  
 Ellen C. Rogers  
 Joan Rohlfing  
 Karen J. and I S. Rohter  
 Patricia M. Rolland and Michael Cooney  
 Siriporn Rolseth and Eric Rolseth  
 Emily Root  
 Sarah Rosa  
 Debra Rosa  
 Cynthia J. Rosebrough  
 Reverend George and Darlene Ross  
 Elaine Rossi  
 Elizabeth Rougas  
 Richard Rovin  
 Alan and Margaret W. Rowland  
 Libby O. Ruch  
 Annabelle L. Runnels  
 Patricia Ryan  
 Katherine and Brian Sabog  
 Linda Saengaly  
 Anne B. Sage  
 Calvin F. Saito  
 Linda S. Saito  
 Steven S. Saito  
 Michael and Joyce Sakai  
 Eileen A. Sakai

## DONOR LIST BY CATEGORY

Roy T. and Geraldine Y. Sakai  
 Gareth K. and Lisa E. Sakakida  
 Judy Sakamaki  
 Gilbert T. and Arline A. Sakamoto  
 Paul Sakamoto  
 Lynnette S. Sakamoto  
 James N. and Mitsue K. Sakamoto  
 Richard T. and Edna M. Sakimoto  
 Alice Sakumoto  
 Reiko Sakurai  
 Lorilei Y. Salbedo  
 Arturo F. and Dolores M. Salcedo  
 Edwin Salisbury  
 Mae Salomon  
 Setsumi Y. Saltman  
 Joseph S. E. Sam  
 Rosemarie S. Sam  
 Sandra T. Samori  
 Gary H. Samura  
 Daniel H. Sanchez  
 Juergen G. Sang  
 Francis J. Sansone  
 Danette M. Santiago-Haole  
 Wichita K. Santos  
 Eva P. Santos  
 Carol S. Santucci  
 Theodore D. Sappington  
 Miriam L. Sarae  
 Peggy T. and Richard H. Sasaki  
 Bryan K. Sasaki  
 Kaname Sasaki  
 Mamoru Sato  
 Kenji and Nadine H. Sato  
 Shirley Y. Sato  
 Harvey T. and Cynthia M. H. Sato  
 Iwao Sato  
 Rae T. and Herbert S. Sato  
 Susan M. Sato  
 Kent A. Sato  
 Sanford N. and Catherine A. Sato  
 Susan Satogata  
 Alice F. Satsuma  
 Lordes Sauer  
 Connie Saunders  
 Allan K. and Lynn N. Sawai  
 Carolyn T. Sawai  
 Masayoshi and Lorraine T. Sawai  
 Calvin K. Y. Say  
 Desiree Saya  
 Gertrud T. Scaggs  
 Carl W. and Yen T. Scheer  
 Terry R. and Amy T. Scheidt  
 Cynthia D. Scheinert  
 Joanna L. Scherer-Myers  
 Sandra Schlage  
 Conchita V. Schlemmer  
 Traci L. and Jon S. Schmalley-Jacobs  
 Danielle Schmidt  
 Patricia K. and Gerald Schmitz  
 Sybil K. Schoenstein  
 Betty A. Schoepfner

Jane B. Schroeder  
 Roxanne M. Schulman  
 Evelyn Schwarz  
 Theresa Scott  
 Sean W. and Leslie K. Scott  
 James K. and Maureen D. Scott  
 Christie L. Searle  
 Vivian D. Sekiya  
 Frederick K. and Patricia M. Sekiya  
 James F. Sellar  
 Lawrence M. and Patsy A. Seo  
 Jimette H. Sequin  
 Eugene P. Sergeant  
 Michael M. Serikaku  
 Barbara J. Service  
 Eddie P. and Josephine P. Seson  
 Rachel Shaak  
 Praful Shah  
 Beppie J. and David Shapiro  
 Claude B. Shaw  
 Dorothy Shayne  
 Deanne R. Shepherd  
 Aylor R. Shepherd  
 Guy T. Shibayama  
 Ms. Janet Shibuya  
 Audrey Shigaki  
 Ronald Shigekane  
 Arlene S. Shigemasa  
 Laura M. and Raymond K. Shigenaga  
 Claudia C. Shigeta  
 Anne Shigeta-Koch  
 Samson S. and Doris Shigetomi  
 Florence Shijo  
 Lorna and Harvey Shima  
 Stanley S. Shimabukuro  
 Alton M. and Sandra S. Shimabukuro  
 Mike T. Shimabukuro  
 Shuei Shimabukuro  
 Yoshiko Shimabukuro  
 Tate Shimae  
 Raymond K. Shimamoto  
 June J. Shimata  
 Jackie Shimizu  
 Stanley A. and Mary H. Shimizu  
 Jiro Shimomura  
 Michael and Jo Ann Shimonono  
 Rose Y. Shin  
 Michelle Mi Hee Shin  
 Chassidy Shinno  
 Laurie Shinsato  
 Rosemary O. Shinsato  
 Ann A. Shinsato  
 Steven T. and Sadako Shintaku  
 Beverly A. Shintaku  
 Sue S. Shiohira  
 Marilyn A. Shiraiishi  
 Sandra J. Shiroma  
 Kenneth S. Shiroma  
 Seiko Shiroma

Jane N. Shiroma  
 Masao Shiroma  
 Mitsue K. and Wayne S. Shishido  
 Karen S. Shishido  
 Reverend John Shoemaker  
 Gary B. Shon  
 Richard Y. Shozuya  
 Caroline L. Shugart  
 Alicia M. and Michael J. Signaigo  
 Gwen M. Silva  
 Stephen A. Silva  
 David P. Silva, Jr.  
 Noenoe Silva  
 Rizaline F. Sims  
 MaryAnn Sindiong  
 Loretta Y. Siu  
 Franklin Skrivanek  
 Susan D. C. Slain  
 Linda Sledge  
 Msgr. (ret) Holly C. Smith  
 Eugene and Betty T. Smith  
 Donald C. and Jeanette C. Smith  
 George W. and Julia M. Smith  
 Aaron K. and Yukashi Smith  
 Lynette H. Sniffen  
 Sidney E. and Diana Snyder  
 Patricia Snyder  
 Robert A. Socolow  
 Carla E. Soekias  
 Kathy K. Sokugawa  
 Adam S. and Linda L. Soliven  
 Fay A. Solomon  
 Nathan Solomon  
 Youngi Song  
 Patrick T. and Nancy K. Sonoda  
 Margaret B. Soon  
 Micheline Soong  
 Norman and Joyce E. Sosner  
 Felicitas O. Sotelo  
 Vincent and Joan Souki  
 Clifford F. and Laurdes L. Souza  
 David Souza  
 Joseph A. and Iwalani V. Sowa  
 Robert L. and Kazuko M. Spear  
 Edward N. Spencer, Jr.  
 Roseline Spencer  
 Wesley K. Spencer  
 Steven and Martha Spengler  
 Mae S. Sperry  
 Diane R. Spindle  
 Leslie E. and Poranee N. Sponsel  
 Chris Sprouls  
 Florencia L. Stackel  
 John D. Stahl  
 Kate Stanley  
 Christina P. and Gerard N. Steenman  
 Lisa Stefanko  
 Lina Steffany  
 John L. Steinfeld, Jr.  
 William J. Stempel  
 Judith Sterling

Ivette R. Stern  
 Herta M. Stevens  
 Conchita D. Stewart  
 David M. and Christina P. Stiles  
 John and Carol Stimson  
 Judith A. Stitley  
 Randall R. and Sarah S. Stoddard  
 Paulette K. Stone  
 Charles E. and Iwalani C. Stone  
 Adrienne J. Strauss  
 Eloise A. Strelow  
 Charles A. and Mary E. Struve  
 Gary Y. Suehisa  
 Herbert M. and Lois S. Suenishi  
 Kimiko Sugamura  
 Alan B. Sugihara  
 Miles J. Sugihara  
 Mary K. Sullivan  
 Bill Sullivan  
 Scott P. and Donna L. Sullivan  
 Patricia A. and John Sullivan  
 Roberta Sullivan  
 Gerald A. Sumida  
 Carol and William Sumner  
 Hana E. Sun  
 Francine Y. Sunada  
 Frances Sutherland  
 Laverne T. Suster  
 Patsy H. Suyat  
 Stanley Suzuki  
 George and Esther K. Suzuki  
 Susan S. Suzuki  
 Glenn J. and Beverly Suzuki  
 Gary S. and Jean E. Suzuki  
 Izumi Suzuki  
 Tammi J. Sweeney  
 Ellen B. Sweet  
 Clyde N. and Evelyn M. Swindell  
 Murray G. and Patricia M. Swindler  
 Judith M. Sykes  
 Jeanette M. Sylva-Pereira  
 Nancy N. Taba  
 Allison R. Tabali  
 Gayle A. Tabocol  
 Fumio Tada  
 Antonio B. and Carol A. Tagal  
 Onofreda Tagawa  
 Deborah N. Taira  
 Akiko Taira  
 Robert C. and Carole S. Tajima  
 Matsuo Takabuki  
 Edwina Takaesu  
 Elizabeth W. Takahashi  
 Keith T. Takahashi  
 Stanley T. Takahashi  
 Naohiro and Grace K. Takahashi  
 Carl I. and Racheal K. Takaki  
 Fujio and Cecilia Takaki  
 Koji Takakuwa  
 Duane S. Takamine and Allison M. Lee-Takamine

## DONOR LIST BY CATEGORY

Uraiwan Takamoto  
 Stacey M. Takanishi  
 Bernard K. Takano  
 Howard K. and Jane A. Takara  
 Chris T. Takashige  
 Fumiko Takasugi  
 Dennis S. Takatsuki  
 Kent and Lydia Takazawa  
 Clarence Y. and Irene A. Takeda  
 Clayton K. Takemoto  
 James T. and Emiko Takemoto  
 Ikuo Takenaka  
 Marian Y. Takesue  
 Myra S. Taketa  
 Ralph K. Taketa  
 Laurie and Jimmy Taketa  
 Mari Taketa  
 Linda R. Takeuchi  
 Linda Takeuchi  
 George N. and Muriel M. Takishita  
 Yoshikatsu C. Takishita  
 Kazue Takushi  
 Betty H. Takushi  
 Dorothy K. Tam  
 Lynn T. and Gregory K. Tam  
 Anna K. Tam  
 Kenton K. and Karen M. Tam  
 Patricia A. Tam Sing  
 Milton M. Tamanaha  
 Emily K. Tamanaha  
 A K. Tamaribuchi  
 Sharon A. Tamaru  
 Wendy M. Tamashiro  
 Kenji Tamashiro  
 Ruth Tamashiro  
 Yoshino Tamashiro  
 Judith M. Tamashiro  
 Lynn Tamashiro-Lagua  
 Elaine Tamaye  
 Esther Tamayose  
 Ojay P. Tambio  
 Carolyn E. Tamura  
 Emi Tamura  
 Victoria S. and Shoichi Tamura  
 Kenneth and Joann Tamura  
 Lisa M. Tamura  
 Kathleen K. Tamura  
 James Y. Tanabe and Pauline P. Keyes-Tanabe  
 Jerome K. and Clementina Tanabe  
 Jiro Tanabe  
 Edna F. Tanabe  
 Shannon Tanabe-Clark  
 Aileen A. Tanaka  
 Drusilla Tanaka  
 Edith H. Tanaka  
 Elaine E. Tanaka  
 Evelyn Tanaka  
 Henry A. Tanaka  
 Jill Tanaka  
 Lillian A. Tanaka

Richard I. and Nobuye Tanaka  
 Tracy Tanaka  
 Wayne Y. Tanaka  
 Sophia S. Y. Tang  
 Denis Y. and Karen V. Tanigawa  
 Darci-Ann K. Taniguchi  
 Bernard Tanikawa  
 David H. Tanimoto  
 Lorna M. Tanimoto  
 Lillian T. Taniyama  
 Noboru Tanoue  
 Amy E. Tanoue  
 Donna Tanoue  
 Joyce S. Tapia-Miyahira  
 Robert K. Tashiro  
 B.J. Taum  
 Donette A. Tavares  
 Daryl Tawata  
 May Tay  
 John C. and Anne M. Taylor  
 Marcos L. and Florence Tecson  
 David and Thelma Tengan  
 Constance B. Teodoro  
 Anthony R. Tepedino  
 Myrtle M. and Lowell Terada  
 Sandra Teramae  
 Bruce T. and Rae N. Teramoto  
 Gaye Terayama  
 Minoru Teruya  
 Alfred F. Teruya  
 Rochelle Teruya  
 Bernice F. and Kishiro Teruya  
 Eddie K. and Kathleen M. Teruya  
 Harry K. and Barbara S. Teruya  
 William and Sue A. Tettmeyer  
 Carol M. Teves  
 Priscilla A. Teixeira  
 Irwin and Gladys Thom  
 Jean T. Thomas  
 Leilani W. Thomas  
 John Thomas  
 Winnie R. Thomas  
 Judith E. Thomas Benito  
 John B. and Rita Thompson  
 My Tien  
 Katharine M. Titchen  
 Anna Toda  
 Seichi Toda  
 Carmela Tofoya  
 Mitsuo Toguchi  
 Donn Tokairin  
 Cassandra Tokoro  
 Yoshihiro Tokuda  
 Loretta Tokuda  
 George M. Tokumi  
 Vance R. Tokumoto  
 Calvin Y. Tokumoto  
 John T. Tokunaga  
 Nolan N. and Mavis M. Tokunaga  
 Patsy Tokuoka  
 Tracey L. Tokuoka  
 Wilfred and Dorothy Tokura

Teri Ann T. Tokushige  
 Ellen F. Tom  
 Liane Tom  
 Linda Okita Tom  
 Loretta K. Tom  
 Wilma Tom  
 Cathy L. Toma  
 Cynthia K. Toma  
 Ronald H. and Caryn Y. Tomishima  
 James H. Tomitagawa  
 Bertha I. Tomiyasu  
 Louis Tomsic  
 Sharon J. Tone  
 Dorothy H. Y. Tong  
 Etsuo Tonokawa  
 Michael and Jeanette W. Topolinski  
 Elaine F. Torigoe  
 Sharman Torkildson  
 Virginia Tornbom  
 Donna R. Tosaki  
 Nora H. Toshi  
 Katherine S. Townsend  
 Clifford and Sharilyn S. Toyama  
 Mark A. and Kumbui Troedson  
 Amy Tsark  
 Alice M. Tse  
 Stephanie Tsugawa  
 Sumae E. Tsuha  
 John I. and Gail S. Tsuhako  
 Harlan N. and Insuk J. Tsuruda  
 Derrick Tsuruda  
 William M. and Ruby N. Tsuruma  
 Perry Tsuruoka  
 Hidemi and Judith K. Tsutsui  
 Dennis and Lorna Tulang  
 Shirley B. Tuthill  
 Theodore and Myrna Tyau  
 Lillian S. L. Tyau  
 Karl and Fredericka R. Tyree  
 Jason Ubay  
 Haruko Uchima  
 Trudy T. Uechi  
 Naomi E. Ueda  
 Wilbert M. Uehara  
 Milton K. and Ethel S. Uehara  
 Gary S. Uehara  
 Mike M. and Janis R. F. Uehara  
 Jane C. Uemura  
 Pearl M. Uemura  
 Donald M. Uesato  
 Roy Y. and Marlene L. T. Uesugi  
 Paula Uhl Snyder and Burt L. Snyder  
 Ralph Y. Ukishima  
 Eileen C. Ulep  
 Karina Umehara  
 Alan Y. and Linda W. Umetsu  
 Doris M. Umetsu  
 Grace M. Unemori  
 Margaret M. Unemori

Nancy S. Unemori  
 Faye A. Uno  
 Lillian M. Uno  
 Gary B. Upton  
 Harlow L. and Alice J. Urabe  
 Hisao Y. and Harriet Urcia  
 Tetsuro Ushijima  
 Kimiko and Kaoru Uto  
 Norman M. Uyechi  
 Edwin T. and Patsy K. Uyeda  
 Lorraine M. and Miles M. Uyeda  
 Bette T. Uyeda  
 Grant S. Uyeda  
 Duffy S. and Winona U. Uyehara  
 Rosanne Uyehara  
 Setsuko Uyehara  
 Richard M. and Elanie K. Uyehara  
 Dennis Uyehara  
 Mildred R. Uyeno  
 Alex and Sally Uyeshiro  
 Arline Uyeunten  
 Paul Valbuena  
 E. Haunani Valente  
 Amy E. Valmoja  
 Nancy Van Allen  
 J. E. and K. D. Van Belkum  
 Malia S. Van Heukelem  
 Larry Vannah  
 Ana M. Vargas  
 Walter R. Vasconcelles, Sr.  
 Virginia D. Velci  
 Ronald Verga  
 Ann M. Vergara  
 Louis Vierra  
 Gabriela B. Villanueva  
 Kathleen Villiers  
 Helene C. and L. Alan Vine  
 Laura A. Vines  
 Brigitte and Murray R. Visser  
 Lincoln Vo  
 Richard S. Vosburgh  
 Dale and Olivia Wachsmuth  
 Adele H. Wada  
 Harry and Helen F. Wadahara  
 Richard J. and Ernestine B. Waidzunus  
 Wendy A. Wakai  
 Lawrence M. Wakano  
 Merrald K. Wakazuru  
 Daniel A. Walker  
 Ronald L. Walker  
 John L. Walker  
 Mike Walker  
 Jeffrey S. and Claudia Wallace  
 L. Mililani Wallace  
 Kristine Wallerius  
 James D. and Terri L. Walsh  
 Stephanie Walzak  
 Suey W. Wang  
 Daniel W. Wat  
 Robert M. and Judith M. Watanabe

## DONOR LIST BY CATEGORY

Ethel S. Watanabe  
 Eunice Watanabe  
 Shizue Watanabe  
 Orlando K. and Betty S. Watanabe  
 Gale Y. Watanabe  
 Glenn H. Watanabe  
 Allen Y. and Anne M. Watanabe  
 Royalle Watanabe  
 Amy R. Watanabe  
 Valerie Wayne and Richard Tillotson  
 S. Weaver  
 Monique M. Wedderburn  
 Henry K. and Gail S. Weeks  
 Elizabeth Wei  
 Richard Weil  
 Joel and Gail Weiner  
 Alex and Naomi T. Weinstein  
 Nancy R. Weisner  
 Jennifer Welch  
 Frances A. Wells  
 Stephen A. and Eugenie M. Werbel  
 James H. West  
 Gary R. White  
 Julian T. White  
 Dan and Rayette S. Whitford  
 Thomas A. Whitmarsh  
 James H. Whiton  
 Stacey R. Whitten  
 Wendy J. Wichman  
 Chantelle Wilder  
 Norman O. and Judith Wilhoite  
 Roy H. Wilkens  
 Susan L. Willey  
 Jennifer Williams  
 Arthur E. and Sarah S. Williams  
 Scott D. and Teresita J. Williams  
 Shirlene I. Williams  
 Albert A. Willis  
 William H. and Maria F. Wilson  
 John T. and Michelle L. Wimberley  
 Cindy Winegar  
 Irene Wing  
 Joellen I. and H. M. Winston  
 John J. Witeck  
 Dean Witt  
 Gary L. Wixom  
 Leilani G. Woessner-Brilliande  
 Thomas J. Wogan  
 Gary Woitovitch  
 James C. Wolfe  
 Donald W. and Johanna Won  
 Willis M. and Nancy W. Wong  
 Hazel Wong  
 Myron H. and Janice L. Wong  
 Jane Wong  
 Janey S. Wong  
 Ian and Dina Wong  
 Betty Y. Wong  
 Rodwin L. Wong

Kenneth M. S. and Ramona C. Wong  
 Mary Wong  
 Theodore and Ruth K. Wong  
 Ronald and Adrienne Wong  
 Tony C. Wong  
 Alvin Y. and Doris S. Wong  
 Herman Wong  
 Galen W.J. Wong  
 Richard K. L. Wong and Kathleen Noguchi-Wong  
 Janet T. and Joseph Wong  
 Stella H. Wong  
 Beverly H. and Dick H. Wong  
 Diane M. Wong  
 Elaine S. C. Wong  
 Jonathan and Paula T. Wong  
 Caroline S. Wong  
 Orrin C. and Ann O. Wong  
 Kerrie K. Wong  
 Phillip Don Wood  
 Sandy Wooden  
 Louise Woodward  
 Karen S. Woodward  
 Gertrude E. Woolsey  
 Rosemarie Works  
 Kenneth S. and Julia Yu-O Wu  
 Louis P. Xigogianis  
 Lionel Yagi  
 Darren M. and Deidre Yamabe  
 Kay Yamada  
 George and Maria Yamada  
 Jewelle Y. Yamada  
 James S. Yamada  
 Patrick S. and Janice N. Yamada  
 Darci Yamada  
 Randy and Debbie Yamada  
 Lois N. and Stephen M. Yamada  
 Melinda Yamaga  
 Ethel S. K. and Craig M. Yamaguchi  
 Albert A. Willis  
 Doris T. Yamaguchi  
 Thelma Yamaguchi  
 Jitsumi and Evelyn Yamakawa  
 Toshi Yamakawa  
 George S. and Yoshiko Yamamoto  
 Doris M. Yamamoto  
 Arlene Yamamoto  
 Lynn Yamamoto  
 Helen H. Yamamoto  
 Elsie K. Yamamoto  
 Paula P. and Paul K. Yamamoto  
 Henry H. Yamamoto  
 Dale H. Yamamoto  
 Kiyomi and Emily S. Yamamoto  
 Lee and Lisa Yamamoto  
 Grace C. Yamamoto  
 Naomi T. Yamamoto  
 Gregg Yamanaka  
 Harold and Kimiyo Yamanaka  
 Roy M. Yamanoha

Glenn Y. Yamasaki  
 Mitsuko and Sueo Yamase  
 Frank K. Yamashiro  
 Kathleen H. Yamashiro  
 Bryan I. Yamashita  
 Suzanne S. Yamashita  
 Darlene N. Yamauchi  
 Judy Yanagida  
 Karen F. Yango  
 Nancy N. Yano  
 Brian S. and Eloise M. Yano  
 Narcissus S. Yap  
 Miles K. Yasui  
 Lachelle Yasutake  
 J. Yates  
 Yasuo and Irene Y. Yatsushiro  
 Nellie N. Yeda  
 Frances Y. Yee  
 Henry Yee  
 Joyce K. Yee  
 Eugene A. and Carol S. Yee  
 Herbert W. and Ann Barbara H. Yee  
 Arlene Yee  
 Samuel S. P. and M Joann Yee  
 Ronald K. B. Yee  
 Daniel J. W. and Amy C. Yee  
 Eunkyong Yi  
 Donald S. Yip  
 Robert D. Yoder  
 Lance A. Yokochi  
 Leatrice H. Yokoi-Moon  
 Grace S. Yokono  
 Wallace H. and Sally S. Yokota  
 Susan Yokoyama, R.N.  
 Jeannette F. and Robert I. Yokoyama  
 Stanley K. Yomen  
 Carole K. Yonamine  
 Stanley S. Yonamine  
 Kenneth S. and Julie N. Yoneda  
 Kazuto M. and Joan Yonemitsu  
 Lance S. and Annie B. Yonemoto  
 George K. Yoneshige  
 Ann K. Yoneshige  
 Marian Y. Yong  
 James and Harriet Yoshida  
 Yoshiichi Yoshida  
 Harry S. Yoshida  
 Hiroshi and Patricia A. Yoshikawa  
 Anna V. Yoshikawa  
 Jeannette K. Yoshimori  
 Herbert M. Yoshimoto  
 Paul A. and Joyce S. Yoshimoto  
 Violet A. Yoshimura  
 Beth and Ward Yoshimura  
 Marjorie H. Yoshioka  
 Bert M. Yoshioka  
 Gary T. Yoshitake  
 David and Jozet Yoshitake  
 Pamela Yoshitake  
 Winifred W. Young

Eugene K. Young  
 Lawrence H. F. and Arleen H. Young  
 Warren K. Young  
 Cecilia D. Young  
 Sylvia C. and Michael W. T. Young  
 Louise K. Young  
 Verna H. Young  
 Geraldine W. Young  
 Sylvianne K. Young  
 Danny C. Young  
 Raymond K. and Mew Lan Young  
 Cynthia Y. and Philip C. Young  
 Robert K. C. and Laura Lee Young  
 Karol Young  
 A. Eric Younge  
 John and Dawn Yount  
 Evelyn Y. Yoza  
 Thomas I. Yoza  
 Susan Yoza  
 Roger Yu and Carole Goodson  
 Maw-Ying Yuan  
 Georgiana K. Yuen  
 Penelope N. Yuen  
 Harold A. K. Yuen  
 Bernard H. and Lianne C. Yuen  
 Patricia K. Yuen  
 Albert Y. and Minnie M. Yuen  
 William L. and Georgina M. Yuen  
 Ralph K. and Laverne M. Yukumoto  
 Beverly H. Yutaka  
 Michael Zablan  
 Carl S. and M. J. A. Zakabi  
 Ryan Zakabi  
 Max Zakas  
 John D. Zalewski  
 Gloriette L. Zane  
 Joy A. Zane  
 Maile K. Zarko  
 Carl H. and Jovita Zimmerman



**THE INSTITUTE FOR  
HUMAN SERVICES, INC.**

**546 Kaahiki Street  
Honolulu, Hawaii 96817**

P: 808-447-2800  
F: 808-845-7190

[www.IHShawaii.org](http://www.IHShawaii.org)